

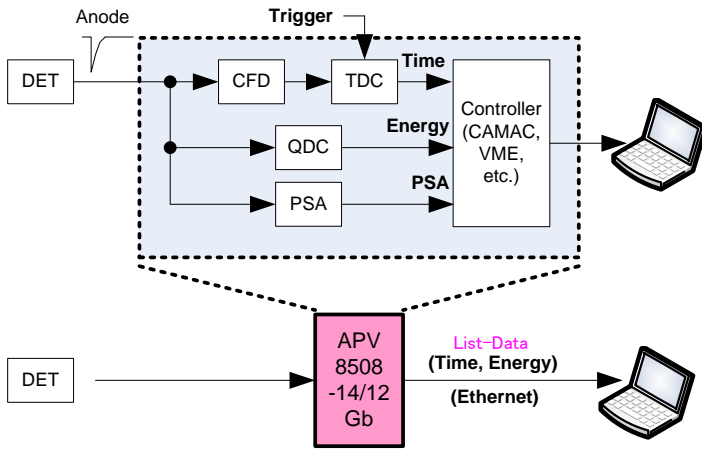
High Resolution Digital Pulse Processor

APV8508-14/12Gb(500MSPS)

MADE IN JAPAN

VME

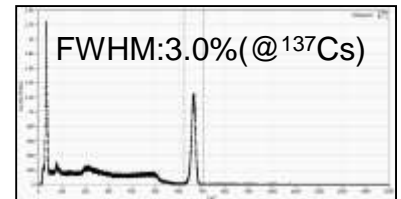
- ADC 500MSPS, Resolution 14/12bit, 8CH
- Timestamp 64bit (Max. 55 month) 7.8ps LSB
- Throughput 1Mcps and more / CH (Histogram mode)
150kcps and more / 8CH (List mode)
- Analysis mode List (TDC+QDC etc.), Wave, Histogram, etc.
- Function (Digital) CFD, TDC, QDC, PSA, Coincidence*¹
- Interface TCP/IP, Gigabit Ethernet
Data transfer 20MByte/sec and more
- Use example gamma/neutron discrimination and β -ray measurement,
high-speed/high-resolution scintillator, such as LaBr₃, LYSO, and etc.



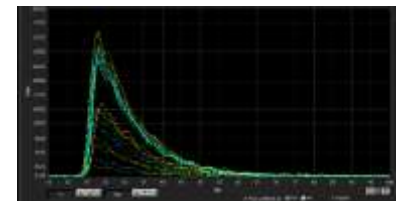
APV8508-14/12

List data example (1 event : 112bit, 14byte)

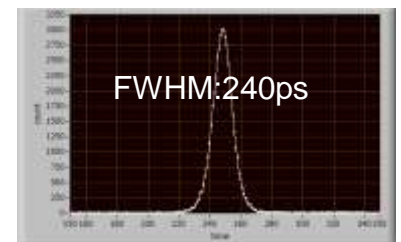
	112	96	80	16	13	0
Event#1	PSA_F[15..0]	PSA_S[15..0]	TDC[63..0]	CH#[2..0]	QDC[12..0]	
Event#2	PSA_F[15..0]	PSA_S[15..0]	TDC[63..0]	CH#[2..0]	QDC[12..0]	
...						
Event#N	PSA_F[15..0]	PSA_S[15..0]	TDC[63..0]	CH#[2..0]	QDC[12..0]	



Histogram (Energy resolution)



Wave



Analysis example (Time resolution)

Detector : LaBr₃(Ce) scintillator vs. LaBr₃(Ce) scintillator

Specifications

Analog signal input variety	PMT anode signal, Fast-NIM signal, etc.
Analog input range	$\pm 1V$ * ¹ (Input impedance : 50 Ω) (LEMO 00 series connector x8)
Analog gain switch	x1 / x3 * ¹
Analog DC offset fix	$\pm 1V$
Analog signal rise time	Less than 2ns
Digital CFD	Threshold, Function, Walk, Delay *Controlled by PC
Digital QDC	Integral time 8ns~4000ns
Digital PSA	FAST / SLOW
External Input / Output terminal (TTL level)	CLK input, CLK output, GATE input, VETO input, CLR input, OR output (LEMO 00 series connector x6) ¹
External dimensions (Unit: mm), Weight	VME1U 20(W) \times 262(H) \times 187(D), About 460g

*¹ Added option, Specifications modifiable.

*Images is for illustration purpose.

*Please note that contents may change without prior notice.

TechnoAP

Design and fabrication of electronic circuit associated with measurement control and radiation measurement

TechnoAP Co., Ltd.

+81-29-350-8011

+81-29-352-9013

2976-15 Mawatari, Hitachinaka-shi, Ibaraki, 312-0012, Japan

<http://www.techno-ap.com>

order@techno-ap.com

Updated on 2017/03/29