

# Mini SURVEY METER TC200L

MADE IN JAPAN

Equipped with CsI(Tl) scintillation detector and USB communication function

$\mu\text{Sv/h}$

TC200L is a high-sensitive (15,000cpm) mini survey meter for gamma-ray which has energy compensation.

Dose rate and gamma spectrum can be displayed and saved on PC by USB communication.

- **Range of dose rate** 0.001 $\mu\text{Sv/h}$  ~ 20 $\mu\text{Sv/h}$
- **Detector** CsI(Tl) 40 × 20 × 10mm
- **Energy response** Within  $\pm 15\%$  (Energy compensation)
- **Energy range** 150keV ~ 3MeV
- **Sensitivity** 15,000cpm ( $\mu\text{Sv/h}$ )
- **Function** Dose rate, Spectrum

## Specifications

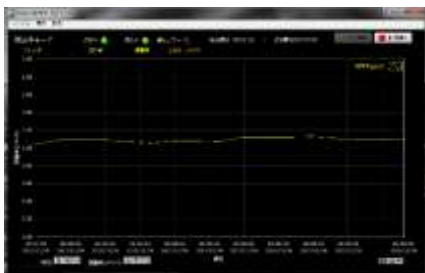
USB communication	○
Range of dose rate	0.001 $\mu\text{Sv/h}$ ~ 20 $\mu\text{Sv/h}$
Detector	CsI(Tl) 40 × 20 × 10 (mm)
Sensitivity	15,000cpm/( $\mu\text{Sv/h}$ )
Energy response	Within $\pm 15\%$ (Energy compensation)
Energy range	150keV ~ 3MeV
Dose rate time constant	3sec, 10sec, 30sec
Energy spectrum	512 channels
Display	Organic EL display, 128 x 64 dots
Power	Two AA batteries (Continuous about 15 hours), USB bus powered
External dimensions	Main unit : 75(W) x 135(H) x 35(D) (Unit: mm)
Weight	About 260g
Environmental condition	Operating temperature : 0 to 40 °C, No dew condensation
PC application	Dose rate, Spectrum System requirement : Windows 8.1 / 7 / XP (SP3) Recommended screen resolution : 1024 x 600 and more.



Dose rate mode



Spectrum mode



Dedicated Application  
(Dose rate mode)



Dedicated Application  
(Spectrum mode)

\*Images is for illustration purpose.

\*Please note that contents may change without prior notice.

# TechnoAP

Design and fabrication of electronic circuit associated with measurement control and radiation measurement

TechnoAP Co., Ltd.

+81-29-350-8011

+81-29-352-9013

2976-15 Mawatari, Hitachinaka-shi, Ibaraki, 312-0012, Japan

<http://www.techno-ap.com>

[order@techno-ap.com](mailto:order@techno-ap.com)

Updated on 2017/03/30