

## APV9020

EIA standard 7U size, rack-mount type  
 Side frames (compatible with EIA and JIS standards) can be attached



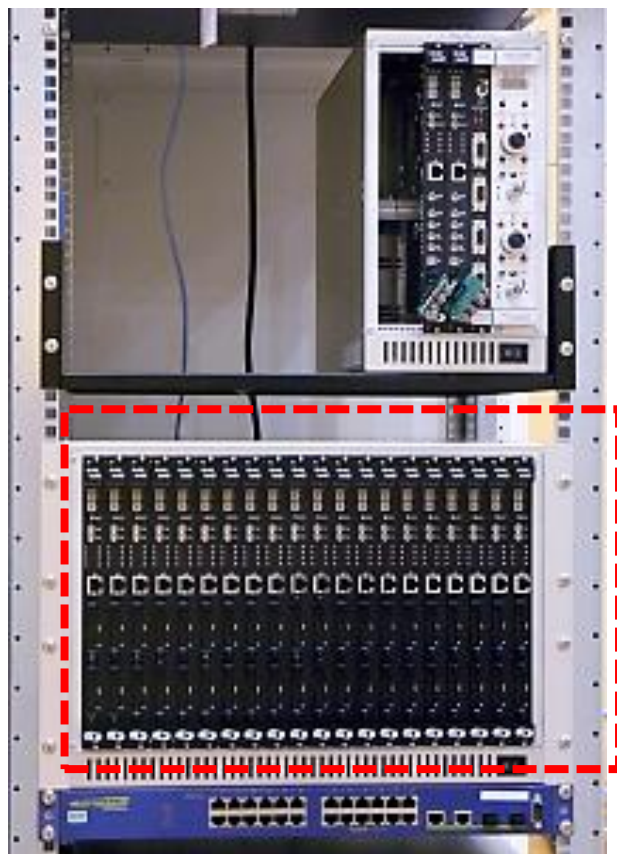
Font side



Back side

### Specifications

Number of Slots	20
Response Model Size	VME6U 233.3 (H) x 160 (D) mm
Built-in Power Supply	+5V, 120A, 600W +12V, 12A, 150W -12V, 12A, 150W
Input Voltage	AC100V/200V Input Frequency: 50Hz/60Hz
Cooling Method	DC fans Fan power supplied from -12V
Material	Aluminum (Anodized)
Dimensions Weight	480.52 (W) x 310.5 (H) x 399 (D) mm
Accessories	AC Power Cable
Optional	Rack-mount brackets Standard L-type *Customizable



Rack Mount Example

\*Images is for illustration purpose.  
 \*Please note that contents may change without prior notice.

