

# USB-MCA

# APG7300A

## Instruction Manual

Version. 1.3.0

Sep. 2023

TechnoAP Co., Ltd.

2976-15 Mawatari, Hitachinaka-shi, Ibaraki 312-0012

TEL: +81-29-350-8011

FAX: +81-29-352-9013

URL: <http://www.techno-ap.com>

E-mail: [info@techno-ap.com](mailto:info@techno-ap.com)

## Safety Precautions / Disclaimer

Thank you very much for purchasing the USB-MCA, Model: APG7300A (hereinafter "This device") of TechnoAP Co., Ltd. (hereinafter "We"). Please read this "Safety Precautions / Disclaimer" before using this device, be sure to observe the contents, and use it correctly.

We are not responsible for any damage caused by abnormality of device, detector, connected device, application, damage to failure, other secondary damage, even if accident caused by using this device.



### Prohibited matter

- Cannot be used for applications that require special quality and reliability related to human life and accidents.
- Please refrain from using in places with high temperature, high humidity and vibration (excluding countermeasures).
- Do not apply power that exceeds the rating.
- Do not turn on the board product with other metals in contact with the board surface.



### Cautions

- If there is smoke or abnormal heat generation, turn off the power immediately.
- It may not work properly in a noisy environment.
- Be careful of static electricity.
- Product specifications and related documents are subject to change without notice.

## Warranty conditions

The warranty conditions for "our products" are as follows.

- Warranty period: One year after purchase.
- Warranty details: If the product breaks down during use within the warranty period, it will be repaired or replaced.
- Not covered by warranty: We do not guarantee if the cause of failure falls under any of the following.
  - (A) Use other than the original usage of "our products"
  - (B) In addition to the above, causes other than "our company" or "our products" (including force majeure such as natural disasters)
  - (C) Consumables, etc.

## - Contents -

1. Overview .....	4
2. Specifications.....	5
3. Appearance.....	6
4. Setup.....	7
4.1. Connection.....	7
4.2. Installation of the driver software.....	8
4.3. Installation of the applications software .....	17
5. Application screen.....	20
5.1. Startup screen.....	20
5.2. Quit screen .....	21
5.3. config tab.....	22
5.4. file tab.....	24
5.5. calibration tab .....	25
5.6. Graph .....	27
6. Measurement.....	29
6.1. Start Measurement.....	29
6.2. Stop Measurement.....	29
7. File.....	30
7.1. Histogram data file.....	30
8. Function .....	31
8.1. Data acquisition by the GATE signal timing.....	31
8.2. Data discard by the VETO signal timing.....	31
8.3. Calculation method of FWHM (half bandwidth) .....	32
8.4. Calculation of gross count and net count.....	33
8.5. Calculation method of two-point calibration.....	34
9. Gauss-fit.....	35
9.1. Startup screen.....	35
9.2. On-line.....	37
9.3. Off-line .....	38
9.4. Notes .....	39
9.5. End .....	39
10. Peak search .....	40
10.1. Startup screen.....	40
10.2. On-line .....	42
10.3. Off-line .....	43
10.4. Notes .....	44
10.5. End.....	44

## 1. Overview

USB-MCA (USB-multichannel analyzer) made by TechnoAP Co., Ltd. APG7300A and APG7300L (hereinafter referred to as APG7300A (L)) are equipped with a high-speed successive approximation ADC, and operate lightweight with only USB bus power without using an AC adapter. It is a compact MCA.

The preamplifier signal from the detector is input to the spectroscopy amplifier (linear amplifier), and the output signal amplified and waveform-shaped (shaped) by the analog circuit is input to the USB-MCA. The amplitude (wave height value, peak value) of this signal includes radiation energy information. MCA is a wave height analyzer that detects the signal and digitally converts the maximum crest value to generate a spectrum (histogram).

"Dead time" is an indicator of MCA performance. The dead time is a time period when MCA can not measure peak value. New events can not be measured while events occur irregularly, such as radiation, while events are being detected, peak detection, digitization of wave height values, memory rewriting, resetting of crest value. Normally, the dead time of MCA is said to be 1  $\mu$ sec with a fast one, but the dead time of our MCA is fixed at 500 nsec.

As a method of peak detection, there is a "first peak detection mode" in addition to a general "absolute mode" in which AD conversion is performed after peak detection. In this mode, AD conversion is started immediately after detecting the pulse peak. Detection conversion processing can be finished within the pulse until 0.25  $\mu$ s pulse shaping, which is regarded as high speed in the spectroscopic amplifier.

As measurement data, there is a "histogram" data. The histogram is the peak value. Transfer measurement data to PC via USB cable.

Drivers and applications that run on Windows are included as software.

This manual explains the handling of our USB-MCA product.

## 2. Specifications

Model: APG7300A and APG7300L

- (1) Analog input
- |                            |  |
|----------------------------|--|
| The number of the channels | 1CH  |
| Input range                | 0 to 10V   |
| Input impedance            | 1k $\Omega$  |
| Possible input pulse width | Minimum 100 nsec up to Maximum 100 $\mu$ sec (*the period exceeding the threshold) |
- (2) ADC
- |                           |   |
|---------------------------|---|
| Conversion method         | Successive approximation type               |
| Resolution                | 16bit                                       |
| Conversion and reset time | 500 ns                                      |
| ADC GAIN                  | 16384, 8192, 4096, 2048, 1024, 512 channels |
| Threshold                 | Full scale 0 to 50% set by PC               |
| LLD                       | Full scale 0 to 100% set by PC              |
| ULD                       | Full scale 0 to 100% set by PC              |
- (3) Performance
- |                           |                              |
|---------------------------|------------------------------|
| Dead time                 | Fixed at 500 nsec            |
| Integral nonlinearity     | $\pm 0.025\%$ (typ.) or less |
| Differential nonlinearity | $\pm 1\%$ (typ.) or less     |
- (4) External input
- |                |               |
|----------------|---------------|
| External input | GATE and VETO |
|----------------|---------------|
- (5) Function
- |                   |                |
|-------------------|----------------|
| Measurement mode  | Histogram mode |
| Communication I/F | USB 2.0        |
- \* USB cable length of 2 m or less is recommended. If there is a low power consumption setting in the USB port, please cancel it or use a USB hub with power supply by AC adapter.
- (6) Software
- |                  |   |
|------------------|---|
| USB-MCA software | Windows version, a driver and application |
|------------------|---|
- (7) External form
- |            |                                  |
|------------|----------------------------------|
| Dimensions | : 70mm(W) x 140mm (D) x 20mm (H) |
| Weight     | : 180g                           |
- (8) Accessories
- Instruction manual
  - CD (a driver and application and instruction manual)
  - USB cable (a connector the cable of USB (A) male and the USB (Mini-B) male)

### 3. Appearance

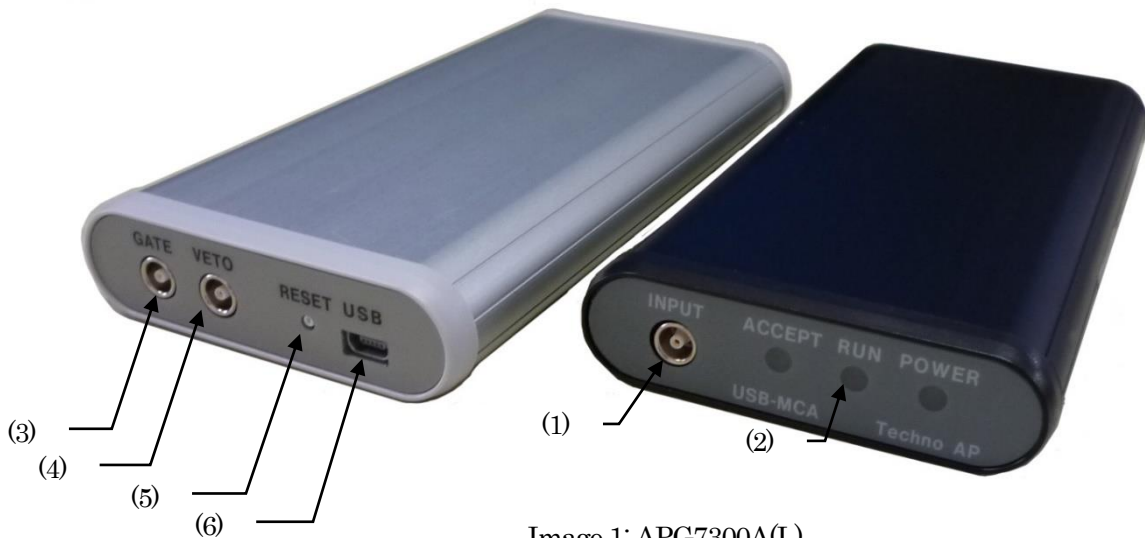


Image 1: APG7300A(L)

[Front]

- (1) INPUT            LEMO (EPL.00.250.NTN) connector for amplifier signal input
- (2) LED             LED for operation check
  - POWER            It turn on at the time of connected with PC
  - RUN                It turn on at the time of a measurement start
  - ACCEPT            It turn on at the time of the signal detection

[Back]

- (3) GATE            LEMO connector for outside GATE signal input.  
Input the signal of the TTL level.  
"High" means data acquisition, "Low" means data non-acquisition.
- (4) VETO            LEMO connector for outside VETO signal input.  
Input the signal of the TTL level.  
"High" means data non-acquisition, "Low" means data acquisition.
- (5) RESET           Reset button
- (6) USB             USB 2.0 Mini-B receptacle (Female terminal)

※ Introduction of the conversion adapter

The input and output connector of this product is used EPL.00.250.NTN made in LEMO company and the other same size connector. In the case of use BNC connector cable to use this product, it is possible to connect to it by having you use the following conversion adapters.

- Manufacturer :    HUBER+SUHNER AG
- Model :            33\_QLA-BNC-01-1/1--\_NE
- Contents :         QLA-01 to BNC
  - Connector Gender 1 Interface QLA-01
  - Connector Gender 2 Interface BNC



Image 2 33\_QLA-BNC-01/1--\_NE

If the adapters interfere with each other, use the LEMO-BNC conversion cable as shown in the photo below.



Image 3 33\_QLA-BNC-01/1--\_NE

## 4. Setup

### 4.1. Connection

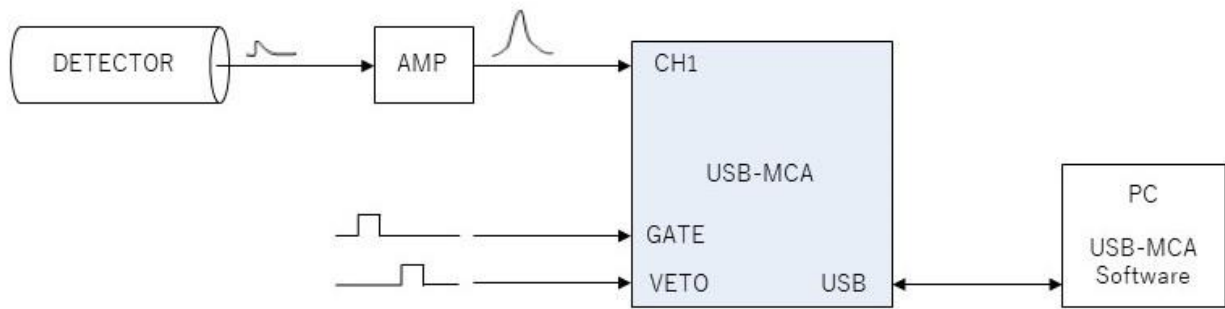


Figure 1: Connection at the time to use of the MCA

- (1) Connect USB-MCA and a PC with an USB cable.

NOTE: It is necessary to install the driver software on the PC to be connected for the first time. See below for how to install the driver software.

**NOTE: Do not connect the signal cable from the detector when the power of this device is OFF.**

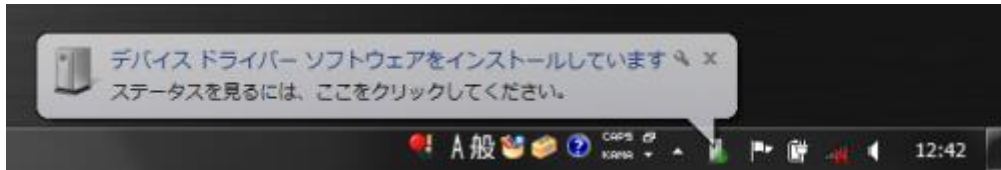
- (2) Check that the "PWR" LED lights up to indicate that the power is on.
- (3) Connect the pre-amp output signal of the detector to a linear amplifier (spectroscopic-amp).
- (4) Connect an output signal got the wave pattern of the linear amplifier (spectroscopic-amp) fixed to "INPUT" of USB-MCA.
- (5) If control by an external signal is required, input the LV-TTL level to the GATE or VETO terminal. When a peak is detected with a cable connected to the GATE terminal, data is acquired when the signal is open or high. Or when detecting a peak with a cable connected to the VETO terminal, data is acquired when the signal is open, or the signal is low.

## 4.2. Installation of the driver software

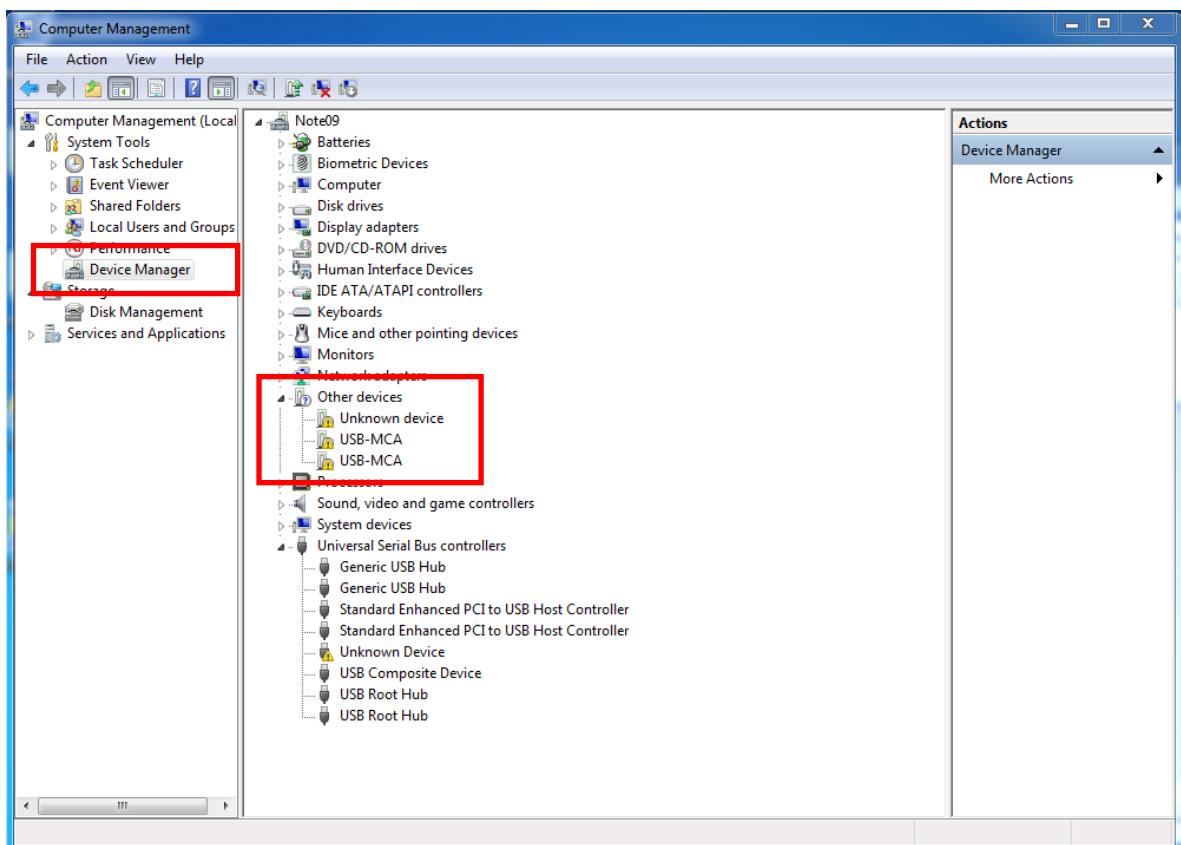
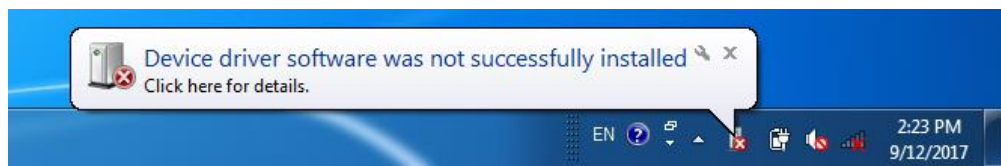
The first time you connect this device to the computer, you need to install the driver software from the included CD-ROM.

### For Windows 7

- (1) **REQUIRED** Log in as Administrator or an account of Administrative right.
- (2) Connect USB-MCA to a PC with a USB cable.
- (3) It is displayed it when "Install device driver software" in the desktop lower right.

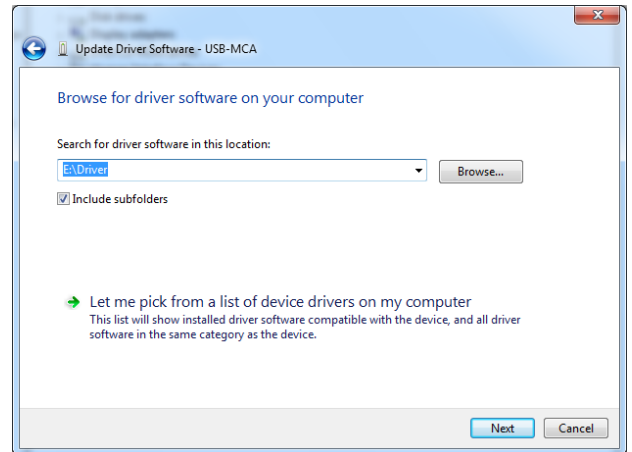
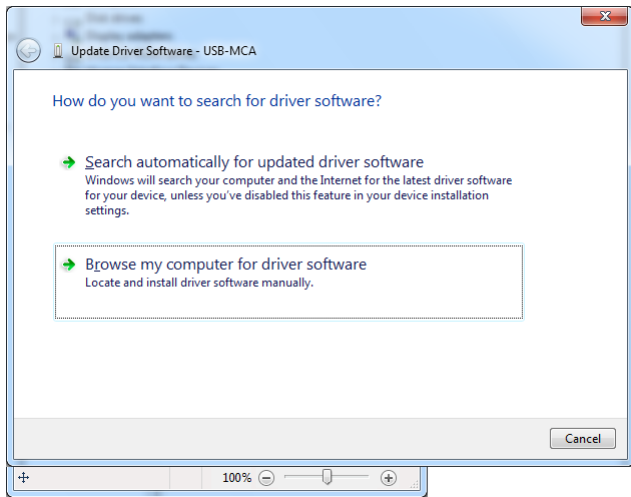


After this, if the message "Device driver software was not successfully installed" is displayed, open the device manger, and check the "USB-MCA" icon. Right-click on the icon and click "Update of the driver software".

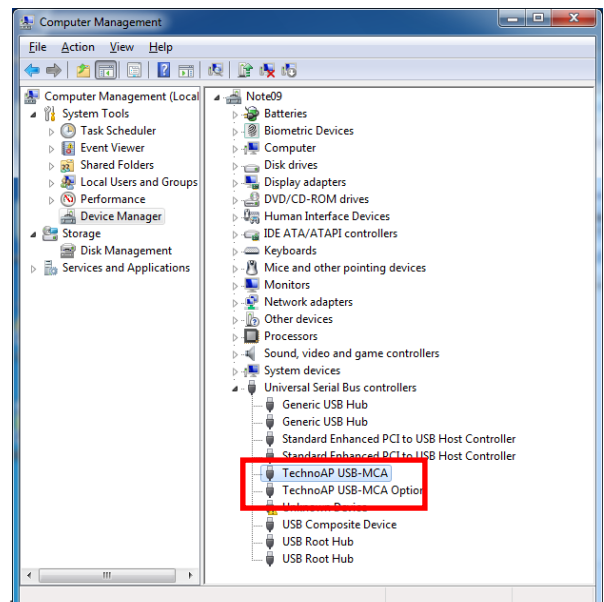
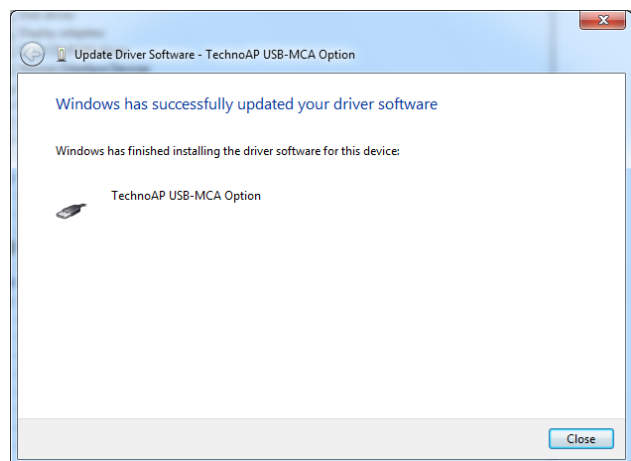
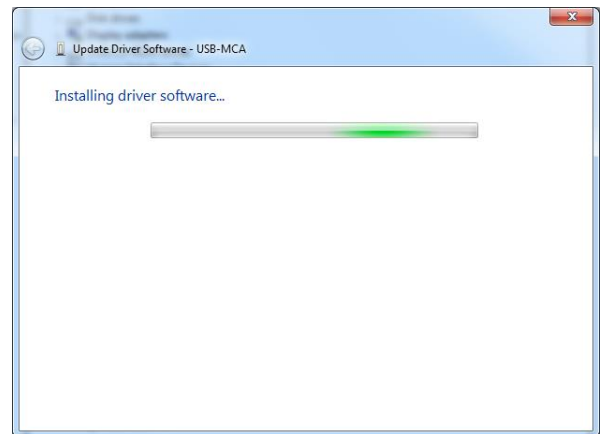
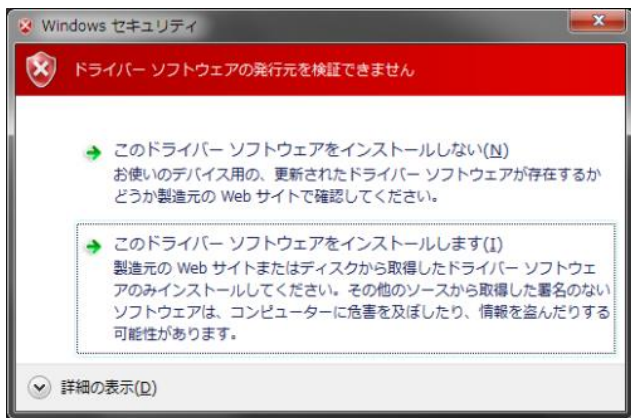




(1) Installation on an interactive basis



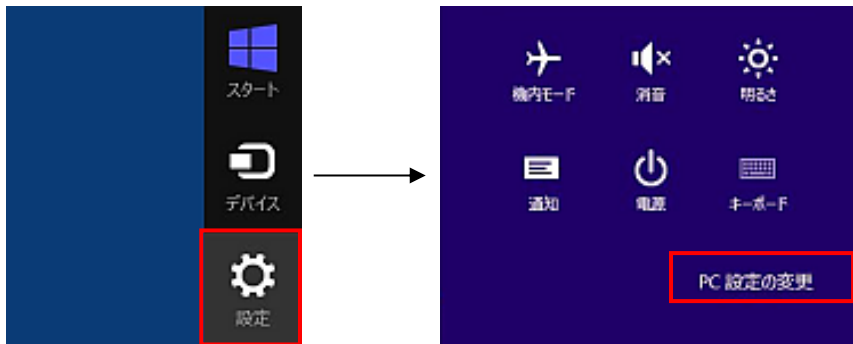
Refer to attached CD "Driver" folder



Next, install "Techno AP USB-MCA Option". After installing the "Techno AP USB-MCA" driver software, install the "Techno AP USB-MCA Option" using the same procedure. In Device Manager, check that the two icons "Techno AP USB-MCA" and "Techno AP USB-MCA Option" are normal. After successfully installing the driver software, install the application. The installation procedure is described in the next chapter.

In Windows8 (64bit), driver software without a digital signature cannot be installed by default to prevent users from accidentally installing driver software. This driver software does not have a digital signature, so you need to "disable driver signature enforcement" by following the steps below before installing.

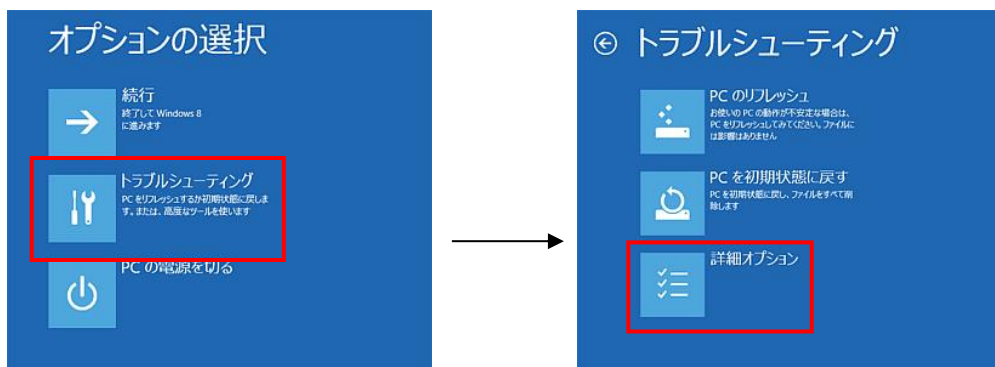
- (1) Display a charm with a start screen.
  - \* For mouse operation: Move the mouse to the upper right or lower right corner of the screen.
  - \* For touch operation: Swipe from the right side of the screen toward the center.
- (2) Select "Settings" from the charms and select "Change PC settings" from the settings menu.



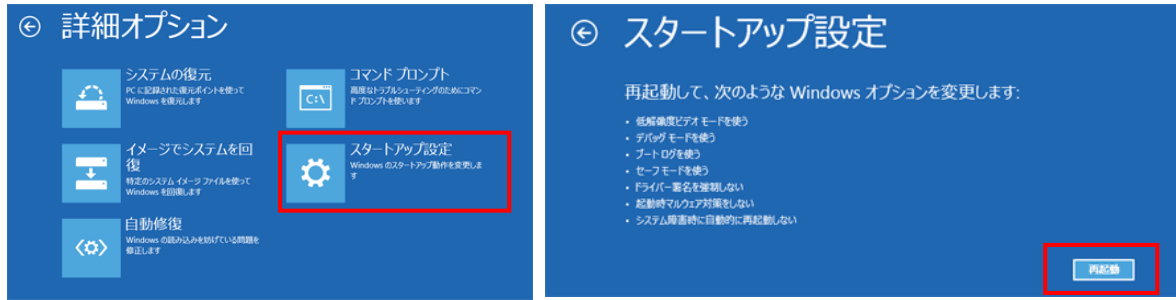
- (3) Select "General" from the "PC Settings" screen, and then select "Customize PC startup"-"Restart now".



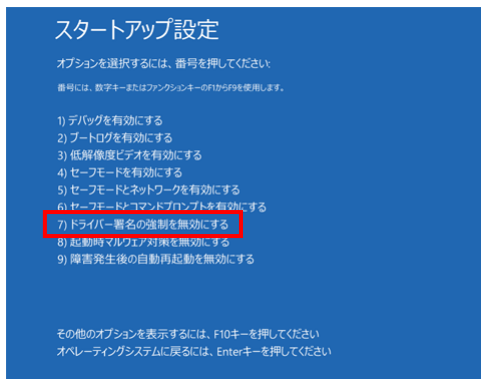
- (4) Select "Troubleshooting" from the "Choose Options" screen, and select "Advanced Options" from the "Troubleshooting" screen.



- (5) Select "Startup Settings" from the "Advanced Options" screen, and then select "Restart" from the "Startup Settings" screen.



- (6) After restarting, press the "7" key on the "Startup Settings" screen and select "**7) Disable driver signature enforcement**".



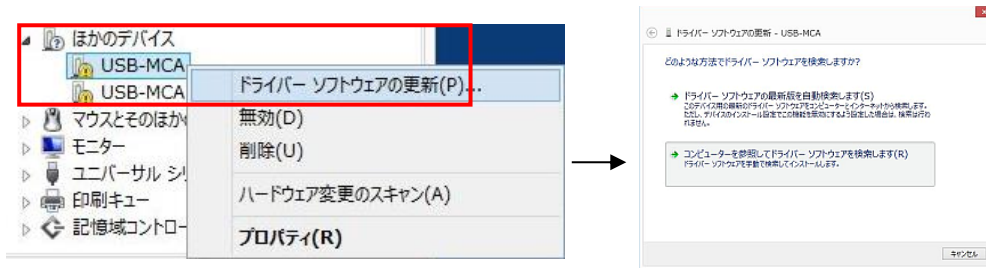
- (7) **REQUIRED** After rebooting, log in as Administrator or log in with an account with administrator privileges.  
 (8) Connect USB-MCA to your PC with a USB cable.  
 (9) Right-click on the Start screen to display the "Apps Bar", select "All Apps", and then select "Control Panel" from the "Apps" view.



- (10) Select "Device Manager" from "Control Panel" to display "Device Manager".



- (11) Right-click "USB-MCA", select "Update Driver Software (P)", and select "Browse my computer for driver software (R)".



- (12) When the "Update Driver Software" screen is displayed, select "Browse (R)", and when the "Browse for Folder" screen is displayed, select the drive where the "USB-MCA" driver software is stored. Select OK. When you return to the "Update Driver Software" screen, select "Next (N)".



- (13) When the "Windows security" screen appears, select "Install this driver software (I)". When the message "Driver software has been updated successfully" is displayed, select "Close (C)".




- (14) When "TechnoAP USB-MCA" is displayed on the "Device Manager" screen, right-click the remaining "USB-MCA" and repeat from (11) to update the remaining driver software.



- (15) The "TechnoAP USB-MCA Option" is displayed on the "Device Manager" screen, and the driver software installation is complete.



In Windows 10 (64-bit), driver software without digital signature cannot be installed by default to prevent the user from installing driver software by mistake. Since this driver software does not have a digital signature, it is necessary to "disable force driver signature enforcement" before installing it according to the following procedure.

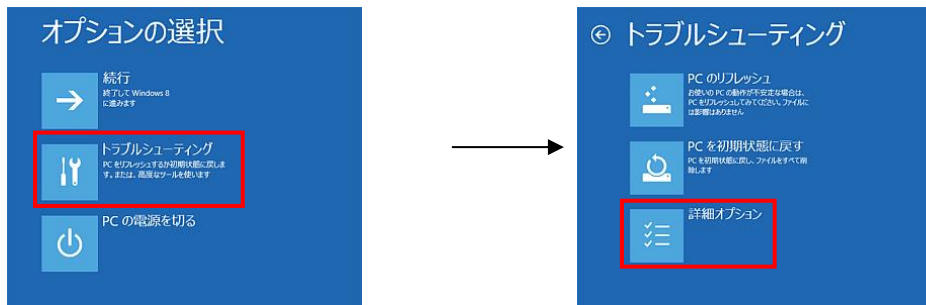
- (1) Click the "Windows" mark  at the bottom left of the screen to display the "Start Menu".
- (2) Select "Settings" from the start menu and select "Change & Security" from the settings menu.



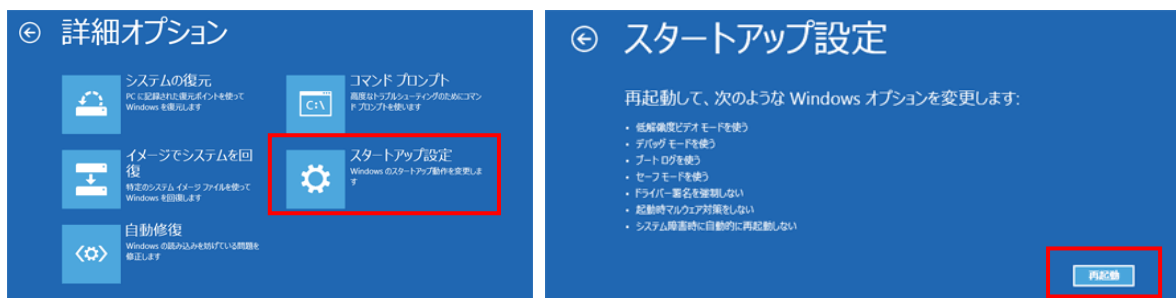
- (3) Select "Recovery" from the "Change and Security" screen and select "Customize PC startup" - "Restart now".



- (4) Select "Troubleshooting" from the "Select Options" screen and select "Advanced Options" from the "Troubleshooting" screen.

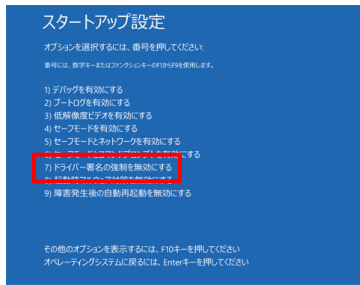


- (5) Select "Startup Settings" from the "Advanced Options" screen, and select "Restart" on the "Startup Settings" screen.





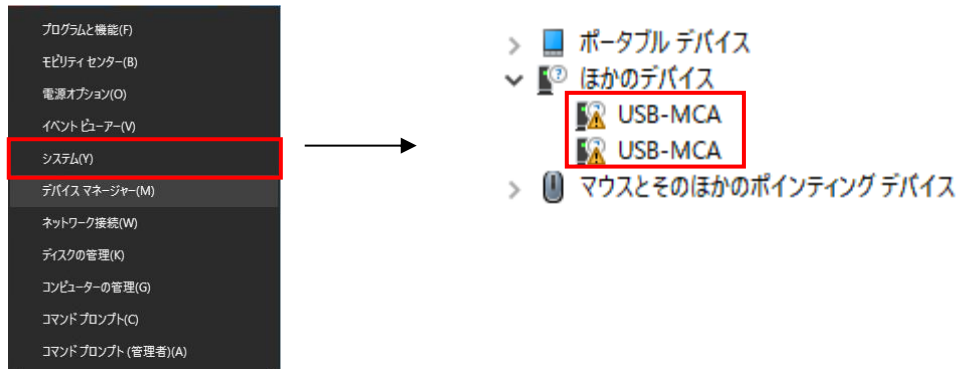
(6) On the "Startup Settings" screen after rebooting, press the "7" key and select "**7) Disable Force Driver Signing**".



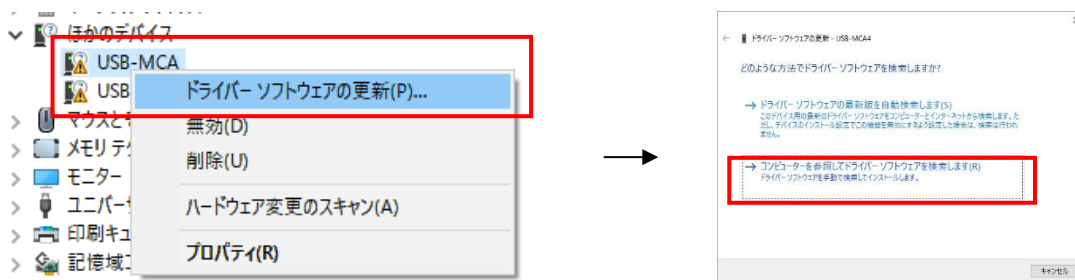
(7) **REQUIRED** After rebooting, log in as an administrator or log in with an account with administrator privileges.

(8) Connect the USB-MCA to the PC with a USB cable.

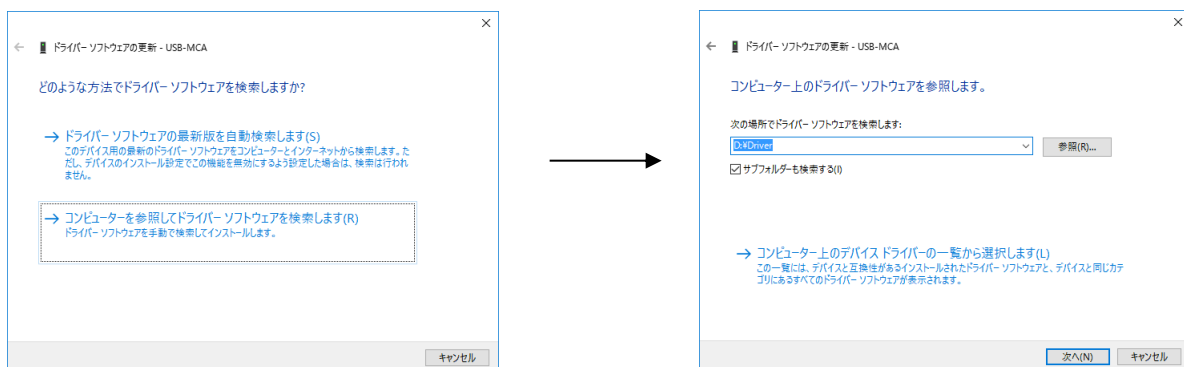
(9) Right-click the "Windows" mark  on the lower left of the screen to display "Menu", and select "Device Manager".



(10) Right-click "USB-MCA", select "Update Driver Software (P)", and select "Browse my computer for driver software (R)".



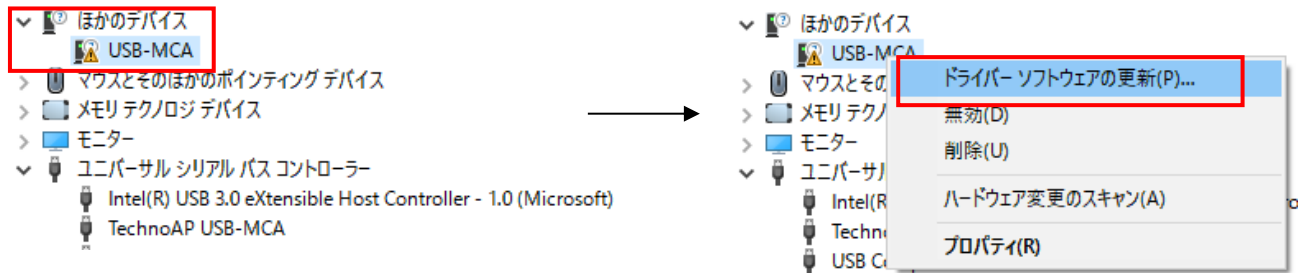
(11) When the "Update Driver Software" screen is displayed, select "Reference (R)", and when "Browse Folder" screen is displayed, select the drive where the driver software of "USB-MCA" is stored. Select when you return to the "Update Driver Software" screen, select "Next (N)".



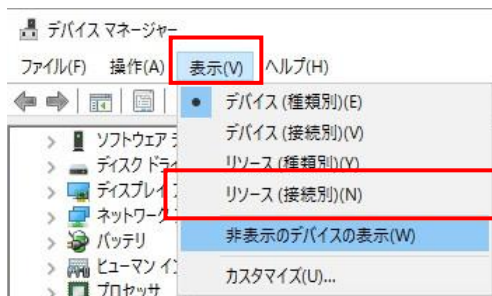
- (12) When the "Windows Security" screen is displayed, select "Install this driver software (I)". When "Driver software has been updated successfully" is displayed, select "Close (C)".



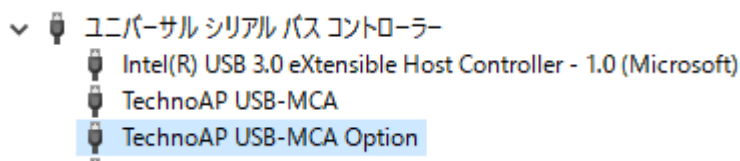
- (13) When "TechnoAP USB - MCA" is displayed on the "Device Manager" screen, right-click the remaining "USB-MCA", repeat from (11), and update the remaining driver software.



- (14) If "TechnoAP USB-MCA" is not displayed on the "Device manager" screen, select "Show hidden devices" from "Display" in the device menu.



- (15) The "TechnoAP USB-MCA Option" is displayed on the "Device Manager" screen, and installation of the driver software is completed.



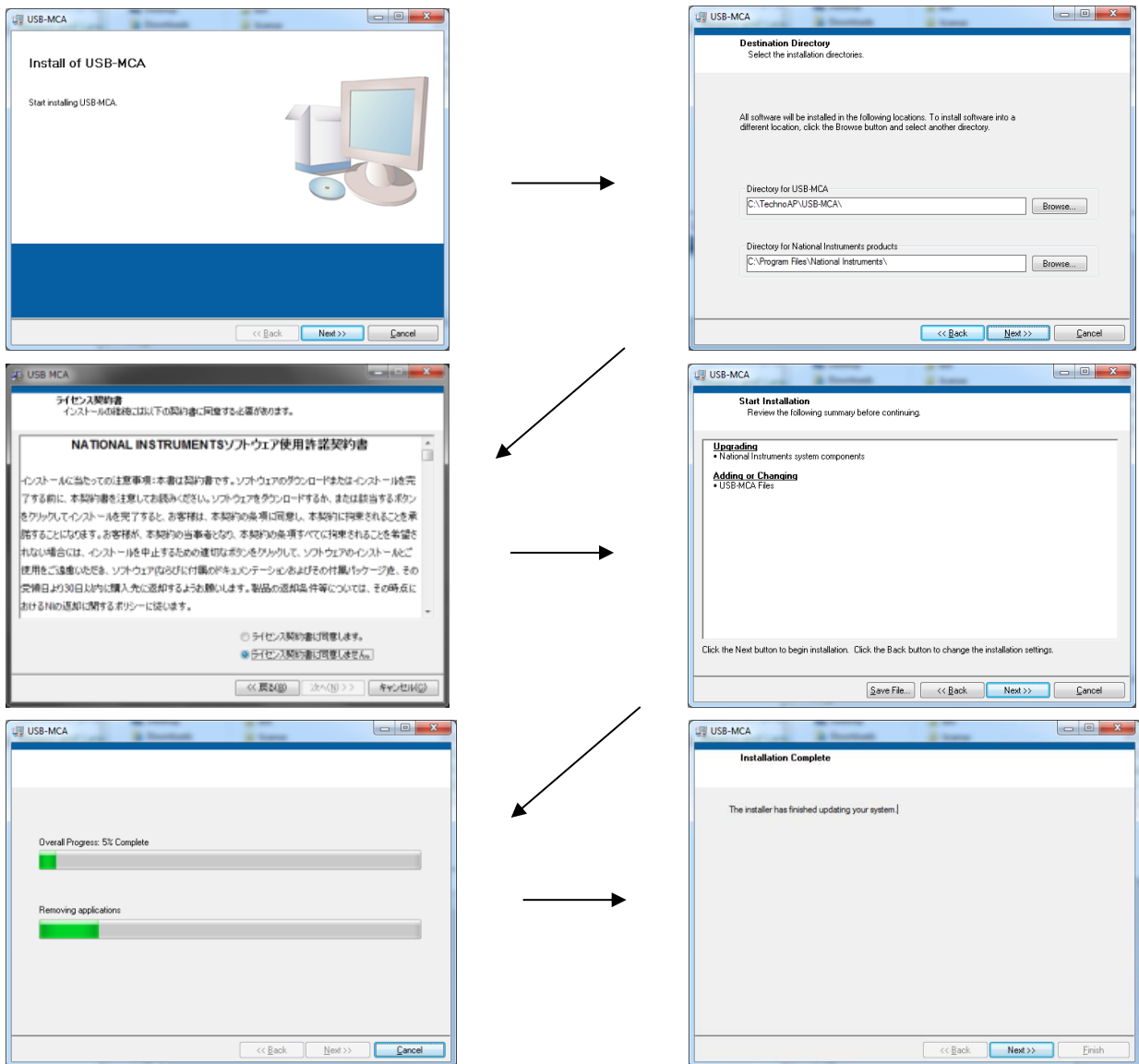


### 4.3. Installation of the applications software

After the driver software has been successfully installed as described in the previous chapter, you need to install the USB-MCA application (the executable file) and the LabVIEW runtime engine, which is the development environment. The installer on the included CD contains the USB-MCA application and the LabVIEW runtime engine, which can be installed at the same time. The installation procedure is as follows..

#### For Windows 7 \* Same for Windows 8

- (1) **REQUIRED** Log in as Administrator or an account of Administrative right.
- (2) Execute "setup.exe" in the "Application" folder in the attached CD. Proceed with the installation interactively

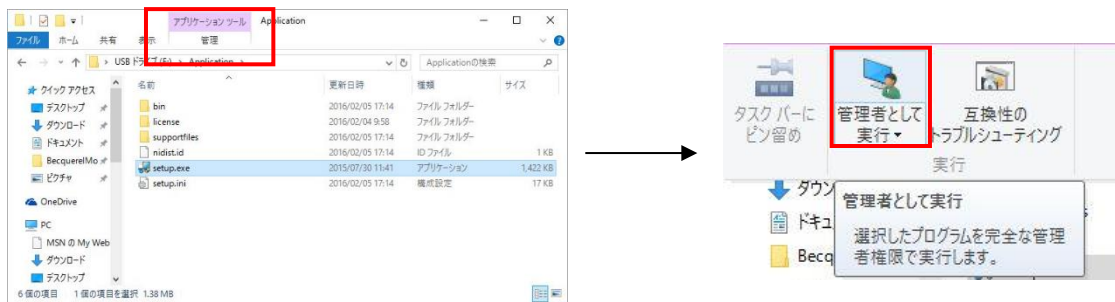


- (3) Execute "Start button" - "TechnoAP" - "USB-MCA".
- (4) The application "USB-MCA" will start.

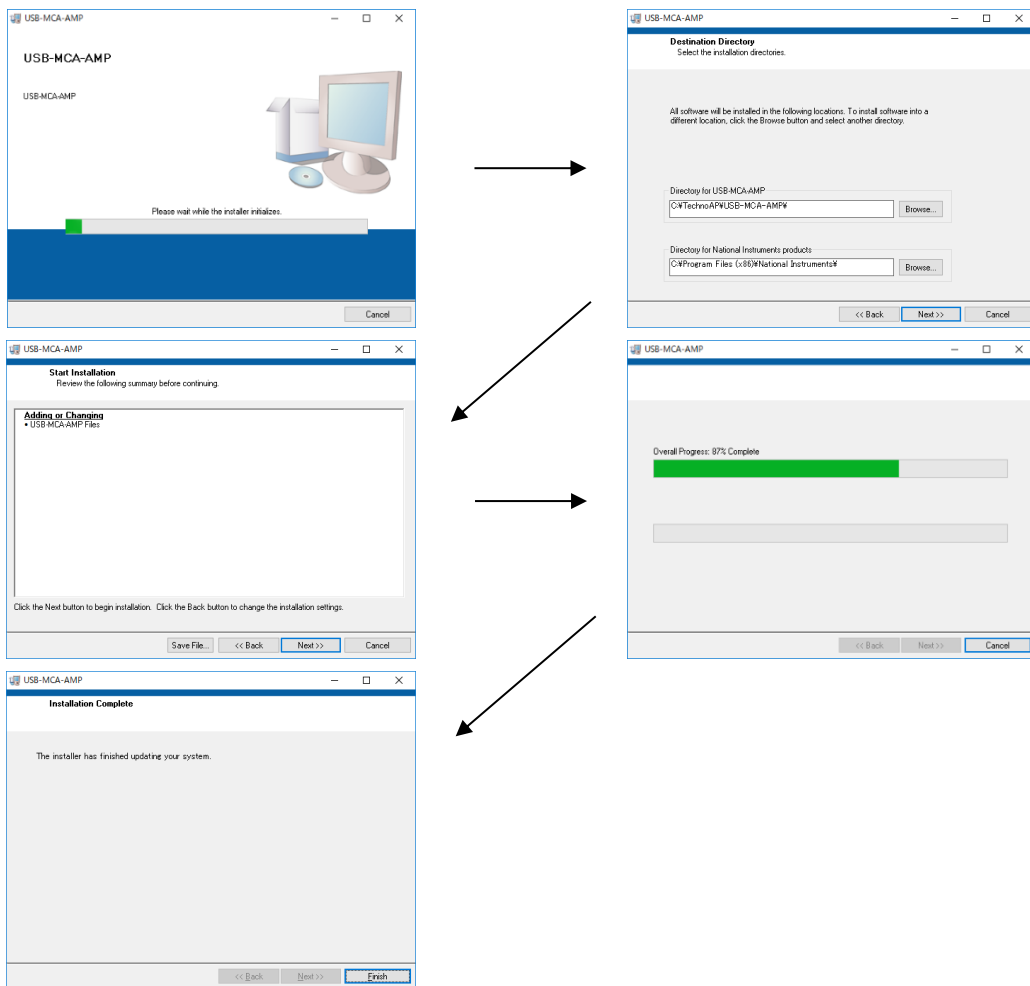
If the "connection error" dialog is displayed immediately after startup, check whether the device is properly connected to the PC and whether the device is recognized by the device manager.

**For Windows 10 \* Same for Windows 11**

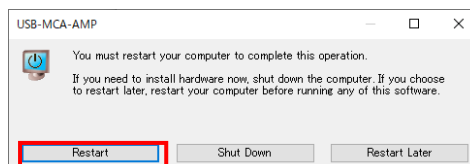
- (1) Select "Setup.exe" in the "Application" folder in the supplied CD. Select "Manage" in the application tool of the menu and select "Run as administrator".




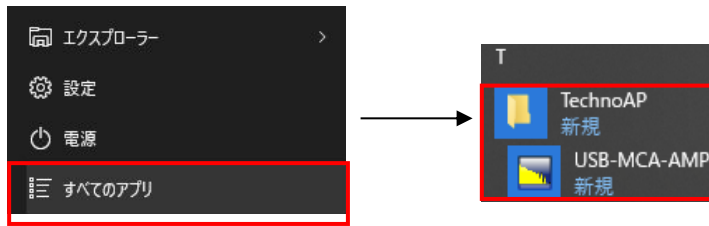
- (2) Run "Setup.exe" in the "Application" folder in the supplied CD. Proceed with the installation interactively.



- (3) Display the computer restart, click the "Restart" button to restart.



- (4) Right-click the "Windows" mark  at the bottom left of the screen to display "Menu" and execute "All apps"->"TechnoAP"->"USB-MCA".



- (5) The application "USB-MCA" starts up.

If a "connection error" dialog is displayed immediately after startup, check if the device is correctly connected to the PC or if the device manager recognizes the device.

**\* Uninstall**

To uninstall, select "USB-MCA" from "Settings"->"System"->"Apps and Features" and select "Uninstall".



"Uninstall this application and its related information will be stalled easily" is displayed. Select "Uninstall".



## 5. Application screen

### 5.1. Startup screen

Execute in order of start button, "TechnoAP", "USB-MCA". Alternatively, if you execute the shortcut icon "USB-MCA" on the desktop, the following startup screen will be displayed.

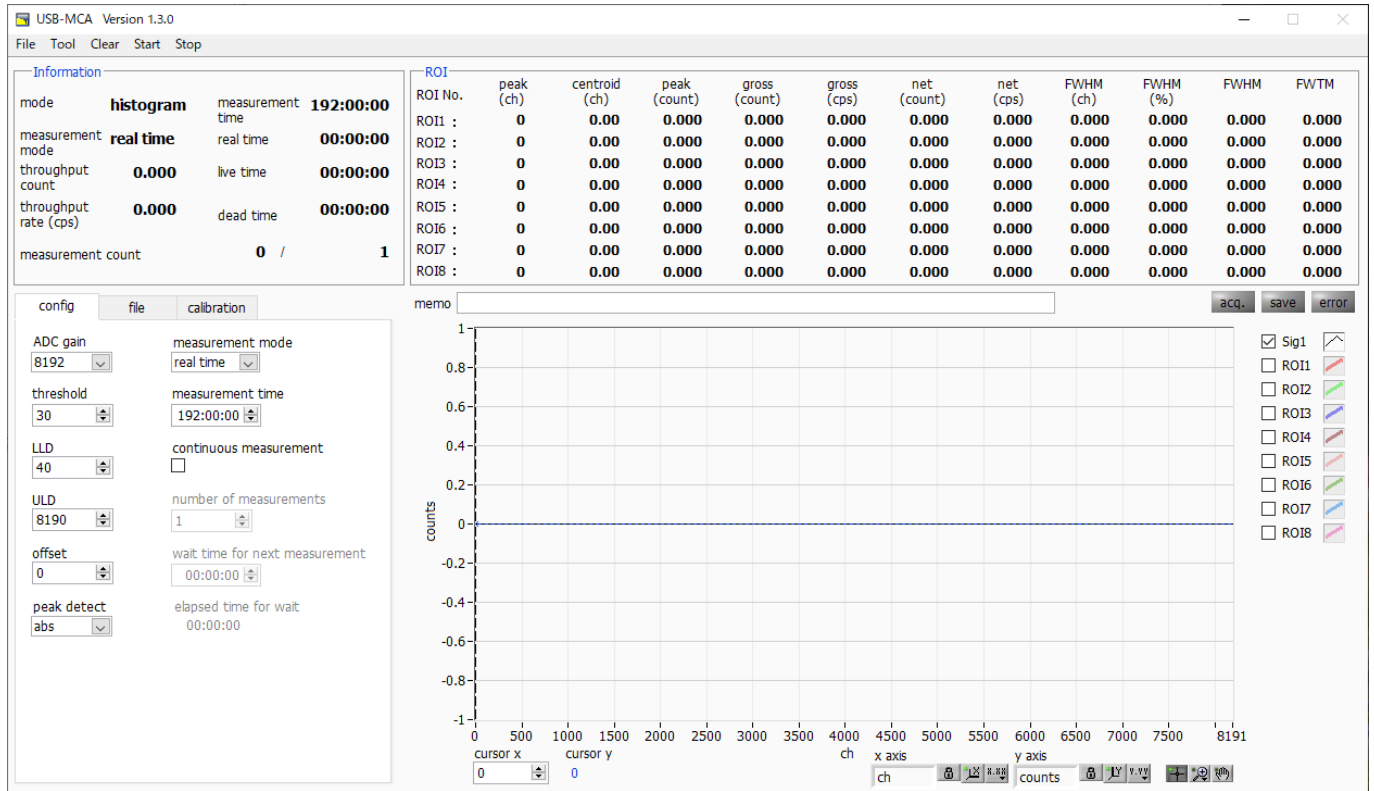


Figure 2: Startup screen of USB-MCA

#### \* Menu section

- |                             |   |
|-----------------------------|---|
| File - open config          | Reading the configuration file  |
| File - open histogram       | Reading the histogram data file   |
| File -save config           | Save current setting to file  |
| File - "save histogram      | Save current histogram to file  |
| File - save image           | Save this screen with PNG form image  |
| File - quit                 | Quit  |
| Tool - gauss fit analysis   | Open gauss fit screen. Performs Gaussian fitting on the specified peak and performs half-value width analysis, etc. |
| Tool - peak search analysis | Open peak search screen. Perform peak detection on histogram data and perform half-value width analysis, etc.       |
| Clear                       | Initialize histogram data in this device  |
| Start                       | After sending all settings to this device, send measurement start to this device                                    |
| Stop                        | Send measurement stop to this device  |

\* Tab section

config	Measurement settings
file	File settings
calibration	Settings such as ROI (Region Of Interest) for energy calibration

\* Information section

mode	Mode. Indicate "histogram"
measurement mode	Measurement mode. Display "Real time" or "Live time"
throughput count	Total count. The number of the handled events
throughput rate(cps)	Count rate. The number of the handled events for one second
measurement time	Setting measurement time
real time	Real time (real measurement time)
live time	Live thyme (effective measurement time). real time - dead time
dead time	Dead time (invalidity measurement time). real time - live time This is the dead time from when the input signal exceeds "threshold" (described later) to when a peak is detected, and its peak value is determined.

\* ROI section

peak(ch)	Channel with maximum count
centroid(ch)	Center value (ch) calculated from the sum of all counts
peak(count)	Maximum count
gross(count)	Sum of counts between ROIs
gross(cps)	Sum of counts between ROIs per second
net(count)	Sum of counts minus background between ROIs
net(cps)	Sum of counts minus background between ROIs for 1 second
FWHM(ch)	Half width (ch)
FWHM(%)	Half width / Peak value * 100
FWHM	Half width
FWTM	1/10 the width of the peak

- \* acq. LED      Blinks during measurement
- \* save LED      Lights up while saving data
- \* error LED      Lights up when an error occurs

## 5.2. Quit screen

To exit the application, click "File" and then "quit" on the menu bar. After execution, the following confirmation screen for ending is displayed.

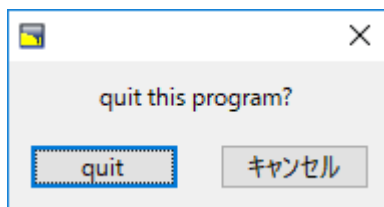


Figure 3 Quit confirmation window

Click the "quit" button to finish. After execution, the application screen disappears and ends.

### 5.3. config tab

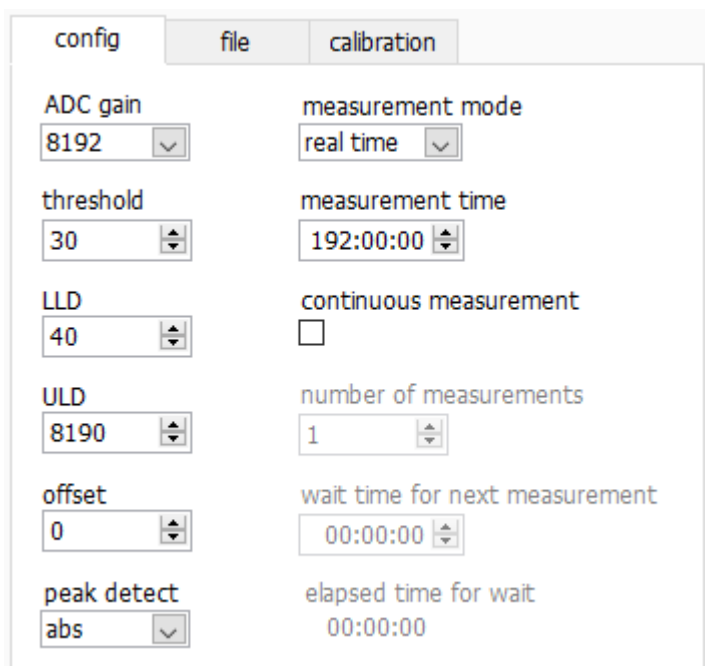


Figure 4 config tab

\* ADC gain

Gain of ADC. Select from 16384, 8192, 4096, 2048, 1024, and 512 channels (ch). The input voltage range of the amplifier output signal of each channel is 0 to 10V. Divide this range by the above channel. For high energy resolution detectors such as Ge semiconductor detectors, you can obtain data with fine resolution by selecting 16384. However, when the count is small, it takes time to acquire the peak. Since energy resolution is somewhat inferior such as NaI (TI) scintillation detector, if it can not be divided finely, set 4096 channels and so on. Select from 16384, 8192, 4096, 2048, 1024, and 512 channels (ch).

※ Attention ※

The upper limit is as follows without being able to use all domains of the number of the channels.

ADC gain	16384	8192	4096	2048	1024	512
The channel upper limit	16127	8063	4031	2015	1008	504

\* threshold

Sets the threshold (threshold) of the waveform acquisition start timing. The unit is digit. The setting range is 0 to 16383. Set to the value less than LLD. Waveform shaping Triggers for peak detection and AD conversion from the timing when the input signal exceeds the threshold setting value. If this setting is set too high, we can not acquire peak value of low energy. Conversely, if the setting is too small, noise will be picked up. For example, when "ADC gain" is "16384", set "threshold" and "LLD" at around 100 in the beginning. While looking at the histogram "input rate / throughput rate", gradually lower it, it discriminates the boundary with the noise where the value increases, and sets the threshold value slightly above it.

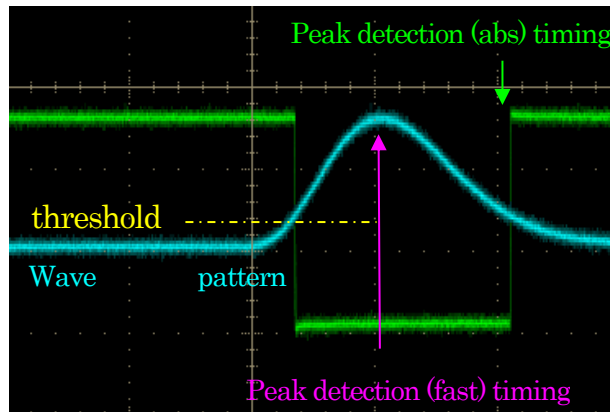


Figure 5 threshold and peak detection (abs / fast) timing

- \* Set LLD energy LLD (Lower Level Discriminator). The unit is ch. We do not count ch below this threshold. Set it to a value greater than or equal to threshold and less than ULD.
- \* Set ULD energy ULD (Upper Level Discriminator). The unit is ch. We do not count ch above this threshold. Set it to a value larger than LLD.

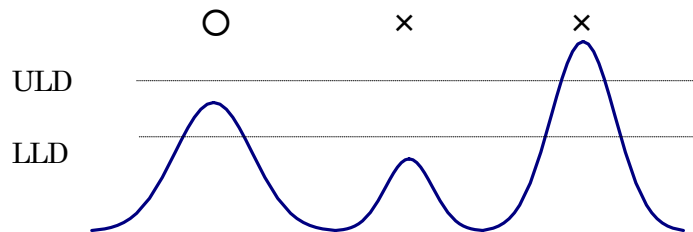


Figure 6 LLD and ULD

- \* offset Set the offset of the positive direction. The unit is Ch.
- \* peak detect Select "abs" or "fast" for a detection method of the peaks (high peak value)
  - abs Absolute mode. Start AD conversion when it arrives at the peak after surpassing threshold and it damps less than threshold. Acquirable high peak value more certainty.
  - fast Fast mode. It always seeks a high peak value and start AD conversion just after it arrives at the peak value. It is for high count measurement.
- \* mode The mode is only "Histogram". Stores away a high peak value from the linear amplifier signal in up to 16,384 ch and makes histogram.
- \* measurement mode Select "Real time" or "Live time" as a measurement mode.
  - real time It measure the time data which you set beforehand.
  - live time It measure it until the time that it set beforehand in effective measurement time (difference of real time and the dead time)
- \* measurement time Measurement time setting. The set range is from 0 for 192 hours (8 days).
- \* continuous measurement Possibility of continuous measurement execution. When ON, repeat measurement for the number of "number of measurements".
- \* number of measurements Number of measurements during continuous measurement execution. 1 to 1,000,000.
- \* wait time for next measurement Standby time before measurement starts at continuous measurement. 0 to 1 hour.
- \* elapsed time for wait Waiting elapsed time.

## 5.4. file tab

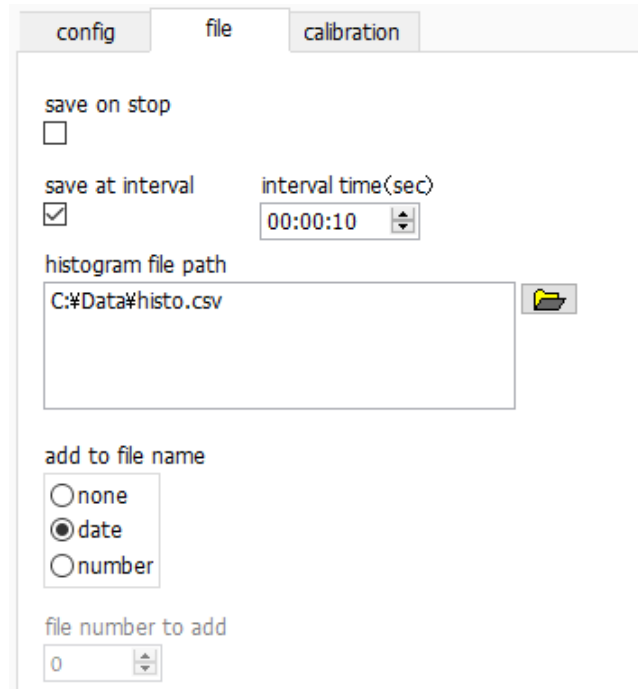


Figure 7 file tab

- \* save on stop When measurement is completed, histogram data is saved in a file. The file is saved in the same format as described above.
- \* save at interval Sets whether to save histogram data to file at preset time intervals.
- \* interval time(sec) Sets the time interval of consecutive saving of histogram data. The unit is seconds. The setting range is from 5 seconds to 3600 seconds.
- \* histogram file path Sets the absolute path of the histogram data file. No extension is allowed. Depending on the setting of "add to file name", it will be in the following format based on this file name. As an example, check "save at interval", set 10 in "interval time(sec)", set "C: ¥Data ¥ histo.csv" in "histogram file path", select "date" in "add to file name", then start measurement at 2023/09/01 12:00:00, At first, after 10 seconds, data storage starts with the file name "C:¥Data¥histo\_20230901\_120010.csv". then after next 10 seconds, save as "C:¥Data¥histo\_20230901\_120020.csv" file.
- \* add to file name Selection of additional entry of histogram data file name.
  - none No additional notes.
  - date Added measurement end date and time.
  - number Added sequence number starts with file "file number to add"
- \* file number to add Initial measurement number for appendix. The 6-digit number of 0 is appended to the file name. When it exceeds the maximum value 999999, it returns to 0. If there is a file with the same name, it will be overwritten.



### 5.5. calibration tab

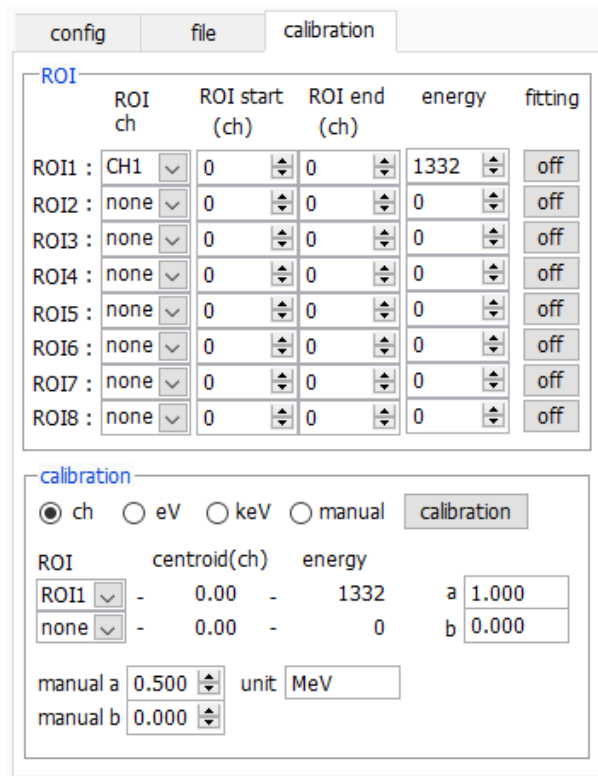


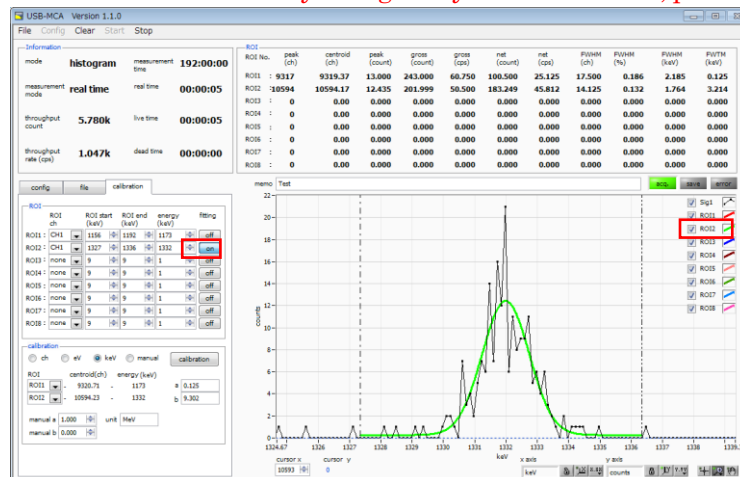
Figure 8 calibration tab

Set ROI (region of residence) and the energy calibration. It calculates the number of the counts or the half bandwidth of the peak by setting ROI at the spectrum peak.

"ROI" part

- ROI CH: Choose the CH number that ROI intends for. It is stable in up to 8 ROI for 1 CH signal.
- ROI start: Set a start position of ROI. The unit depends on the situation of the energy calibration.
- ROI end: Set an end position of ROI. The unit depends on the situation of the energy calibration.
- Energy: Define the energy level of the peak position (ch). In the case of <sup>60</sup>Co, you set it 1173 or 1332. When you choose "ch" in next "calibration" part, it detects a peak between ROI and calculate keV/ch from the peak position (ch) and energy level that you set and do a summary for a calculation result of the half bandwidth.
- Fitting: Set whether it applies gauss fitting for a spectrum between ROI. Even a state with a few counts can calculate half bandwidth when you make "ON" such as the chart below.

※ Caution ※ The CPU load may be higher by PC. In that case, please use "OFF".



"calibration" part

Types of calibration: Choose the unit of the X-axis among following three.

- ch ch (channel) unit indication  
The unit of "FWHM" of "FWTM" of ROI is optional.
- eV eV unit indication. Calculate degree of leaning a and graft b of linear function  $y=ax+b$  so that ch is eV with two kinds of peaks (center level) in one spectrum and two points of calibration of the energy level and set it in the X-axis. The unit of "FWHM" of "FWTM" of ROI is "eV".
- keV keV unit indication. Calculate degree of leaning a and graft b of linear function  $y=ax+b$  so that ch is eV with two kinds of peaks (center level) in one spectrum and two points of calibration of the energy level and set it in the X-axis. The unit of "FWHM" of "FWTM" of ROI is "keV".  
(Example) When there is 1173.24keV of  $^{60}\text{Co}$  in 5717.9ch, and there is 1332.5keV of  $^{60}\text{Co}$  in 6498.7ch, it calculates automatically "a" is 0.20397 and "b" is 6.958297 by two-point calibration.

Manual Set degree of leaning a and graft b and a unit label of linear function  $y=ax+b$  optionally in "manual a" and "manual b" by "unit" and, it used for energy calibration.

ROI Choose ROI targeted for the energy calibration. In "centroid" and "energy of the right neighbor," a central value of choose ROI and energy set level are indicated. For example, it performed one-point calibration by peak center level of ROI1 and "energy" which you set beforehand when you choose "ROI1" and "none", and in case of two points of calibration by peak center level of ROI1 and ROI2 and "energy" which you set beforehand, when you choose "ROI1" and "ROI2".

Manual "a" and "b" The degree of leaning in linear function  $y=ax+b$  to make the cross axle of the graph indicate a, the graft with b as a calculation result of the energy calibration.

Calibration button Execute energy calibration depending on a type of calibration. Degree of leaning (a) and the graft (b) of the graph are calculated after execution. It is a linear function to be applied to the cross axle ( $y= ax+b$ ), and t is displayed by "a" and "b" of the bottom. Please refer to "9.5. Calculation method of two-point calibration" later.

For example, choose "keV" in a calibration part and click "calibration" button. the cross-axle unit of graph, a set point of ROI, the unit of the calculation result of ROI become "keV" like the chart below.

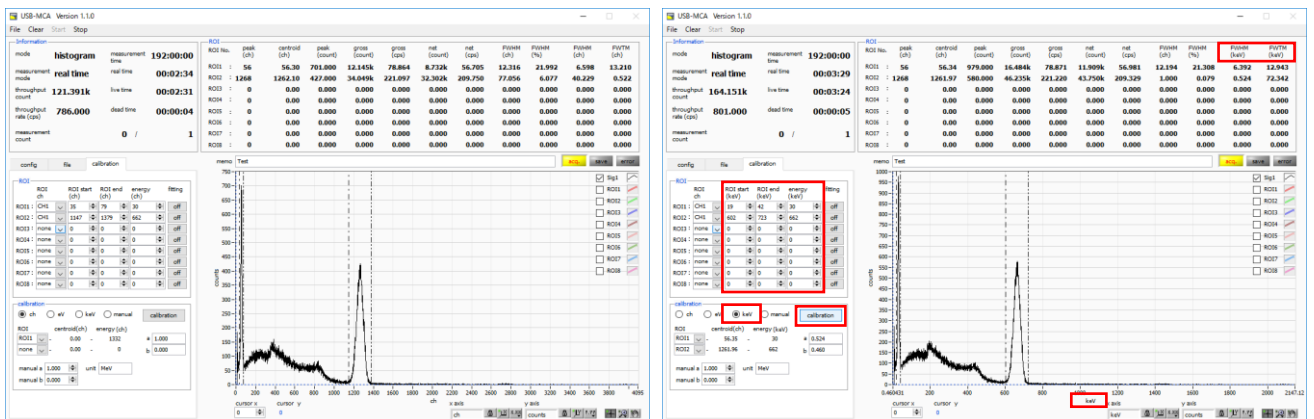


Figure 9 When "keV" is selected in the calibration section  
(Left figure: before energy calibration execution, right figure: after energy calibration execution)

## 5.6. Graph

graph

Indicate the spectrum which gauss fitted by data between spectrum of CH1 and each ROI.

cursor x

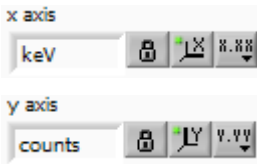
Set the position of the dotted line cursor in the graph. The count value on the spectrum at the set position is displayed in "cursor y".

X-axis range

Click the right button on the X-axis and check "an automatic scale", it becomes the automatic scale. Not an automatic scale, the minimum and the maximum of the X-axis become fixed when you exclude a check. When you change the minimum or the maximum, you put the pointer of the mouse on the numerical value to change and it click or double-clicking.

Y-axis range

Click the right button on the Y-axis and check "an automatic scale", it becomes the automatic scale. Not an automatic scale, the minimum and the maximum of the Y-axis become fixed when you exclude a check. When you change the minimum or the maximum, you put the pointer of the mouse on the numerical value to change and it click or double-clicking.



In the X-axis, set the automatic scale and precision, mapping (linear / logarithm).

In the Y-axis, set the automatic scale and precision, mapping (linear / logarithm).

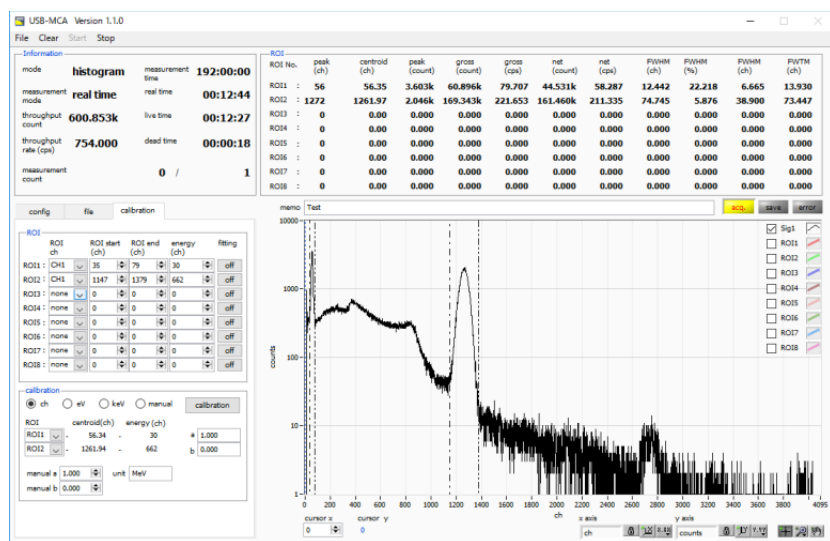
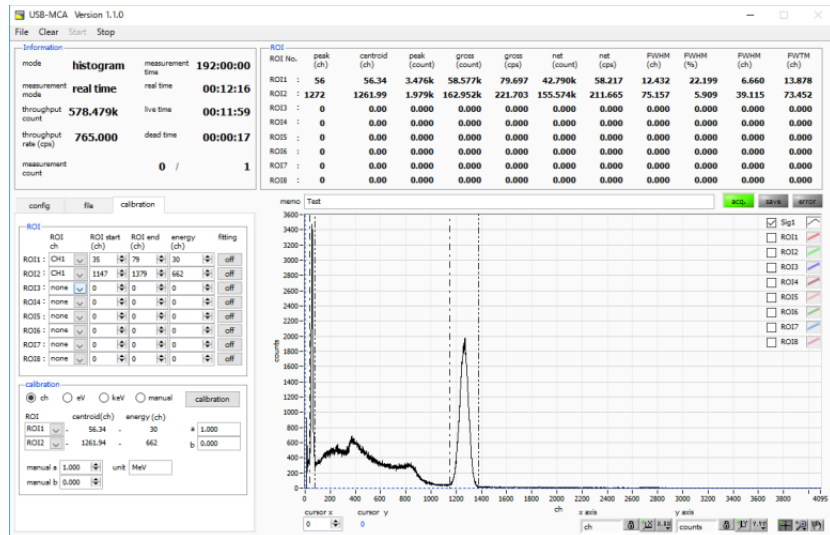


Figure 10 Select "linear" (upper) and "logarithm" (lower) in Y axis "mapping mode"



Cursor movement tool. The cursor can be moved on the graph when setting the ROI.

Zoom

You can select and execute the following six zoom in and zoom out by clicking.

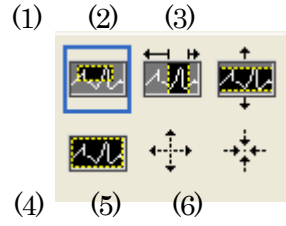


Figure 11 Graph zooming in and zoom out tool

- (1) Rectangle Zoom Use this option to click on a point on the display as the corner of the zoom area and drag the tool until the rectangle occupies the zoom area.
- (2) X - Zoom Zooms in the area of the graph along the X axis.
- (3) Y - Zoom Zoom in on the graph area along the Y axis.
- (4) Fit zoom Auto scales all X and Y scales on the graph.
- (5) Zoom out centering on points. Click the center point to zoom out.
- (6) Zoom in around the points. Click the center point to zoom in.



Pan tool. You can grab a plot and move on the graph.

## 6. Measurement

### 6.1. Start Measurement

- (1) Click the menu "Clear". The histogram data in the device is initialized. If you want to continue the previously measured histogram or measurement results, start the next measurement without clicking "Clear".
- (2) Click "Start" on the menu bar to start measurement after all settings have been sent to this device.
- (3) After starting measurement, transition to the following state.
  - "Acq" LED flashes.
  - The measurement status is displayed in the "Information" section.
  - Real time acquired from this device is displayed in "real time".
  - The "live time" of each channel will display the live time acquired from this device.
  - The dead time obtained from this device is displayed in "dead time" of each channel.
  - Each "ROI No." in "ROI", "calibration" central value in tub ROI range, gross count (range summation) and rate (net counts minus background from the sum in the range) Net Count And the calculation result such as rate, half width, 1/10 width etc. are displayed.
  - A histogram is displayed on the graph.

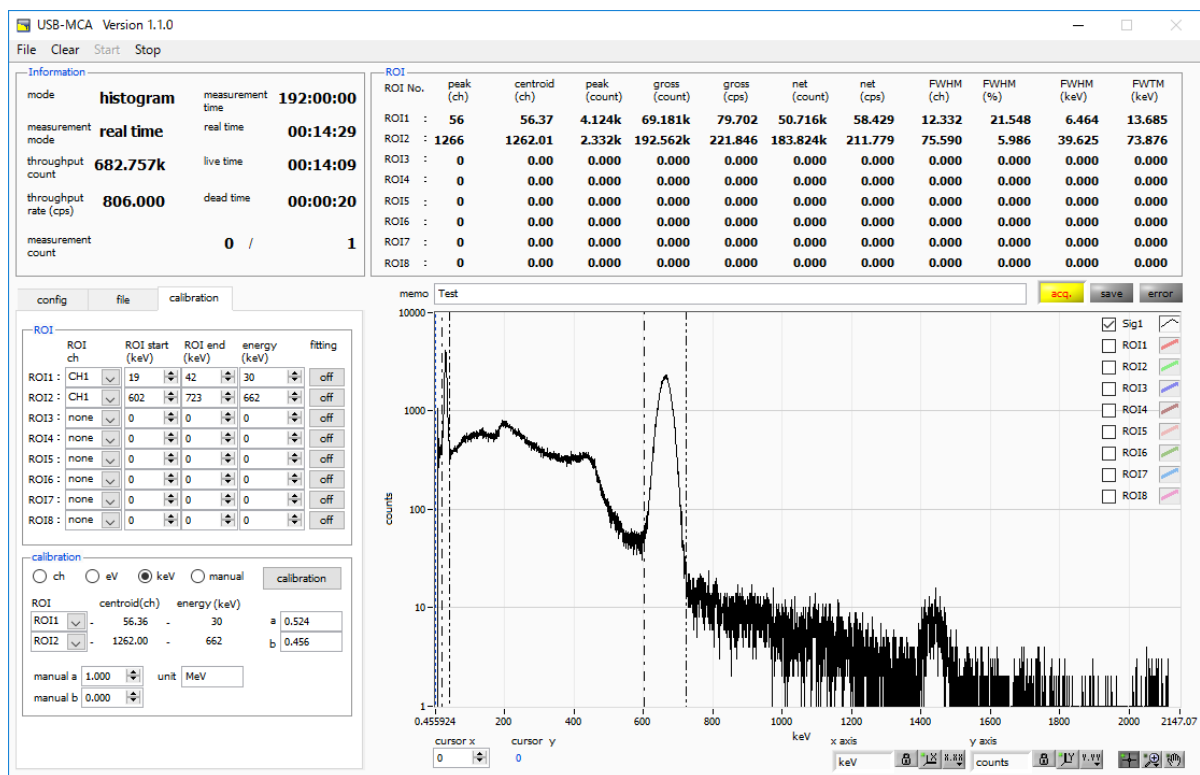


Figure 12 Measurement screen

### 6.2. Stop Measurement

- When "measurement mode" is "real time", measurement will end when "real time" reaches "measurement time".
- When "measurement mode" is "live time", measurement will end when "live time" reaches "measurement time".
- To stop during measurement, click the menu "Stop". Stop measurement after execution.

## 7. File

### 7.1. Histogram data file

(1) File format

Text format separated by comma (csv)

(2) File name

Create arbitrarily

(3) Configuration

[Header] header section

Measurement mode	Measurement mode. Real time or Live time
Measurement time	Measurement time. Unit is seconds
Real time	real time
Live time	live time
Dead time	Dead time
Start Time	Measurement start time
End Time	Measurement end time
ADC gain	ADC gain
threshold	threshold
LLD	energy LLD
ULD	Energy ULD
offset	offset
CursorX	position (ch), count

[Calculation] Calculation section, NOTE: The following is saved for each ROI

ROI No.	Input channel number targeted by ROI.
ROI start(any)	ROI start position (keV etc.)
ROI end(any)	ROI end position (keV etc.)
energy(any)	peak energy value (keV etc.)
fitting	whether execute fitting or not(.0: Non execution, 1: Execute)
peak(ch)	peak position between ROIs (ch)
centroid(ch)	Center position between ROIs (ch)
peak(count)	Maximum peak count between ROIs
gross(count)	Sum of counts between ROIs
gross(cps)	gross (count) per second
net(count)	Sum of counts minus background between ROIs
net(cps)	net (count) per second
FWHM(ch)	Half-width between ROIs (ch)
FWHM(%)	Half-width between ROIs (%)
FWHM(any)	Half-width between ROIs (keV etc.)
FWTM(any)	1/10 width between ROIs (keV etc.)

[Status] Status section

throughput count	Total number of events processed
throughput rate	Number of events processed per second

[Data] Data section

X-axis data (channel or eV, keV, arbitrary), histogram data. Up to 16384 points.

## 8. Function

### 8.1. Data acquisition by the GATE signal timing

When you want to acquire event data at that time from an external condition when an event occurs, input a LV-TTL level signal to the LEMO connector "GATE" on the front panel. When it is high, it measures. When it is low, it does not measure.

Set the external GATE input signal to slow with the DAC monitor and input it in such a range (see the figure below) that the slow output signal from the OUTPUT terminal is sufficiently covered. The guideline for the pulse width of the external GATE input signal is  $\times 8$  for shaping time.

Adjust so slow pole zero does not overshoot or undershoot. Keep the external GATE input signal high until the slow output input signal goes from the baseline to the point where it exceeds the threshold level  $V_{th}$ .

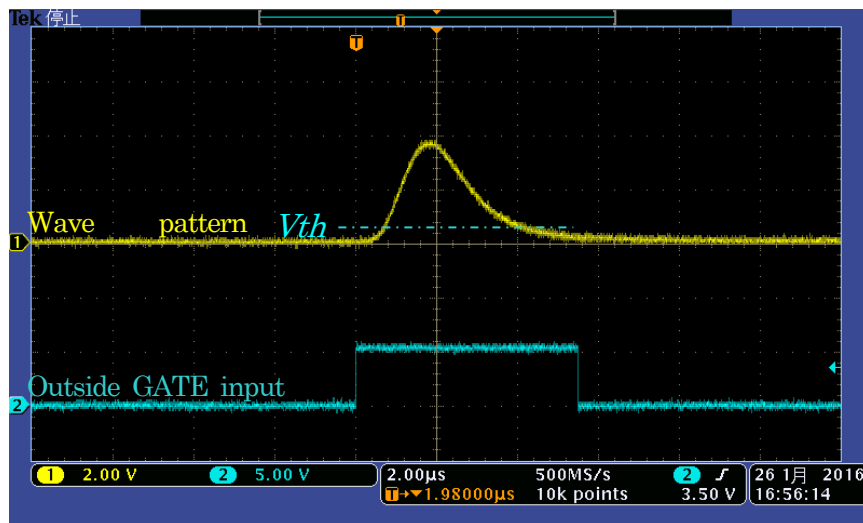


Figure 13 External GATE input signal timing

**NOTE:** As for the external GATE input signal, at LV-TTL level, 0.8 V or less is judged as LOW level and 2.0 V or more is judged as High level. The maximum input voltage is 5V.

### 8.2. Data discard by the VETO signal timing

When you want to acquire event data at that time from an external condition when an event occurs, input a LV-TTL level signal to the LEMO connector "VETO" on the front panel. Contrary to the "GATE" function, it measures when it is low and does not measure when it is high. The timing is the same as GATE described above.

### 8.3. Calculation method of FWHM (half bandwidth)

The FWHM (Full Width at Half Maximum) in the "status" tab is calculated as follows..

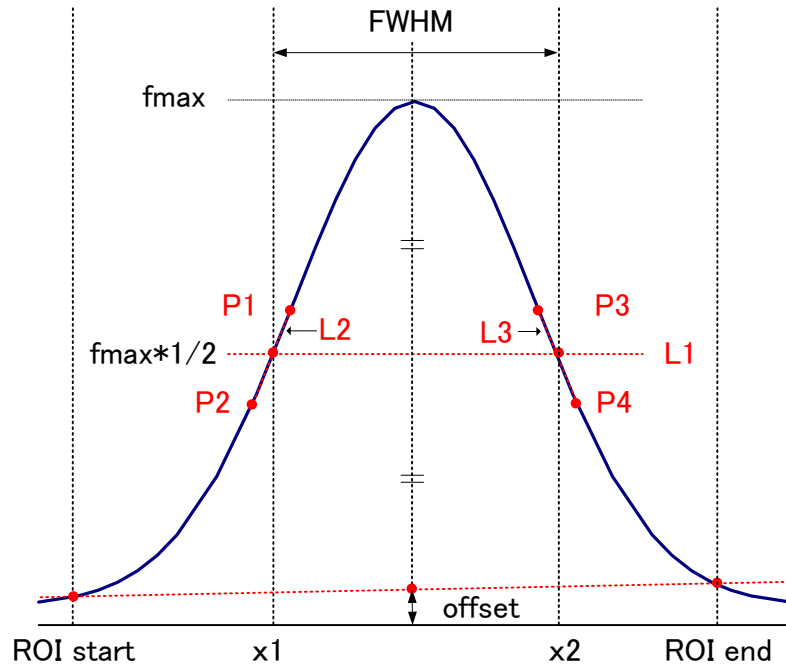


Figure 14 Calculation of FWHM

- (1) The maximum value  $f_{max}$  between ROI Start and ROI end in the histogram is detected.
- (2) Connect the intersection point of histogram and ROI start with the intersection point of histogram and ROI end. The background offset (offset) is calculated by finding the intersection of the straight line and the line drawn vertically from the peak value  $f_{max}$  to the x axis.
- (3) Calculate  $1/2$  of  $f_{max}$  minus offset and draw a straight line L1 parallel to the X axis.
- (4) In order to find two points where the histogram and L1 intersect, the crossing points P1 and P2 and P3 and P4 are detected.
- (5) Draw a straight line L2 connecting P1 and P2 and a straight line L3 connecting P3 and P4.
- (6) Find the X coordinate  $x_1$  of the intersection of L1 and L2, and the X coordinate  $x_2$  of the intersection of L1 and L3.
- (7) The difference between  $x_2$  and  $x_1$  is FWHM.



### 8.4. Calculation of gross count and net count

The "gross" and "net" counts in the "ROI" part are calculated by the Covell method.

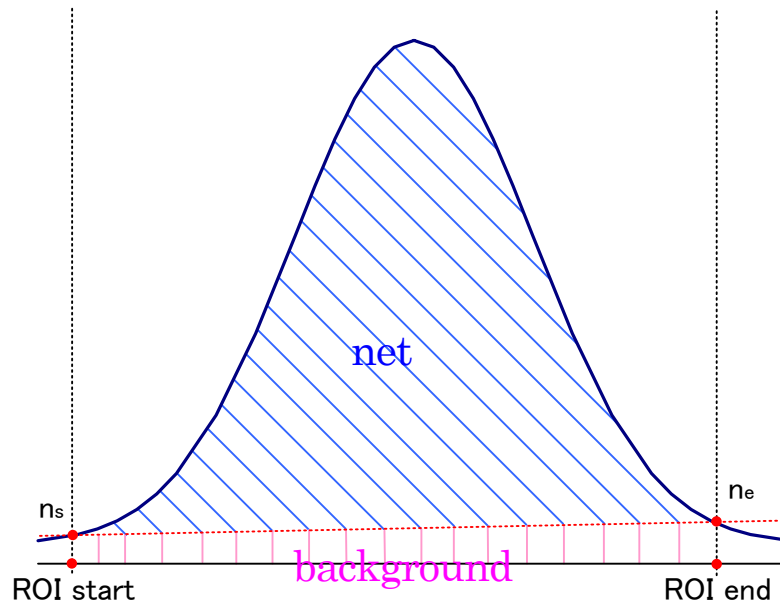


Figure 15 Gross and net calculation

- (1) The " gross" count is the sum of counts between ROI start and ROI end.
- (2) The "net" count is the net count of the peak minus the background count from the "gross" count (blue shaded area above).
- (3) Background (background) count connects ROI start and spectrum intersection  $n_s$  with ROI end and spectrum intersection  $n_e$  by a straight line. This is the area of the rectangle surrounding the four points of ROI start,  $n_s$ ,  $n_e$  and ROI end (pink line in the above figure).

### 8.5. Calculation method of two-point calibration

Perform a two-point calibration using the centroid of the two energy peaks and the peak energy value to make the unit scale of the X axis of the graph an energy (e.g., keV). One-point calibration is also possible.

ROI		
ROI No.	peak (ch)	centroid (ch)
ROI1	: 9446	9446.99
ROI2	: 10728	10729.54

Set "ROI start (keV)" and "ROI end (keV)" in the upper "ROI" in the "calibration" tab, referring to the "centroid (ch)" value of ROI1 / ROI2 displayed in "ROI" at the top of the graph. Or set the range of ROI1 and ROI2 by cursor movement of the graph.

calibration					
<input type="radio"/> ch <input type="radio"/> eV <input checked="" type="radio"/> keV <input type="radio"/> manual   calibration					
ROI	centroid(ch)	energy (keV)	a	b	
ROI1	- 9446.99	- 1173	1.000		
ROI2	- 10729.53	- 1332	0.000		

Select the radio button "keV" in "calibration" at the bottom of the "calibration" tab. Select "ROI1" and "ROI2" as the ROI in "calibration" at the bottom of the "calibration" tab.

ROI					
ROI	ch	ROI start (keV)	ROI end (keV)	energy (keV)	
ROI1	: CH1	1164	1185	1173	
ROI2	: CH1	1323	1352	1332	

Set the peak energy of each of ROI1 / ROI2 to "keV" for how many keV it corresponds.

calibration					
<input type="radio"/> ch <input type="radio"/> eV <input checked="" type="radio"/> keV <input type="radio"/> manual   calibration					
ROI	centroid(ch)	energy (keV)	a	b	
ROI1	- 9446.99	- 1173	0.124		
ROI2	- 10729.53	- 1332	1.831		

When you click the "calibration" button, the slope a and intercept b of the linear equation  $y = ax + b$ , which are calculated by the following equation, are automatically reflected in the lower positions of "a" and "b".

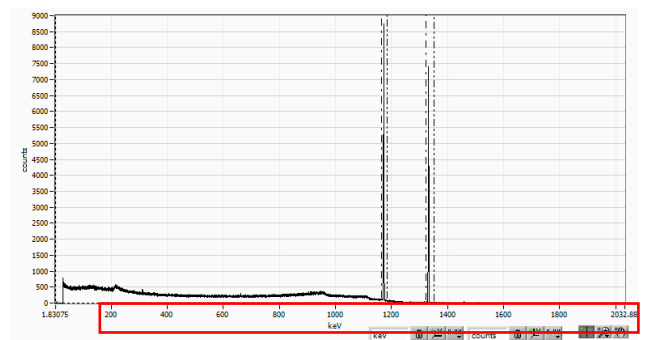
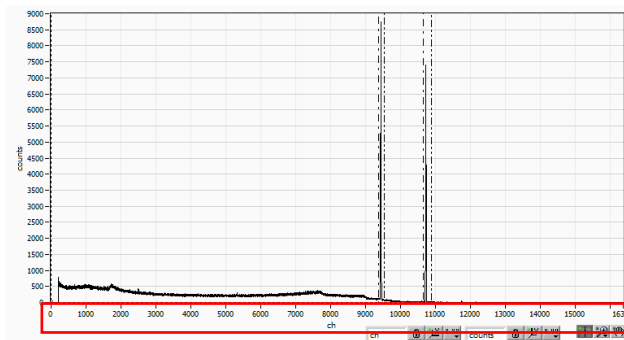


Figure 16 Before Energy Calibration (Left) After Energy Calibration (Right)

$$a = (\text{peak 1} - \text{peak 2}) / (\text{centroid 1} - \text{centroid 2})$$

$$b = y - ax$$

For example, using Co-60, with 1473 keV centroid 9446.99 ch. And 1332 keV centric 10729.53 ch,

$$a = (1332 - 1173) / (10729.53 - 9446.99) = 0.124$$

$$b = 1332 - 0.124 * 10729.53 = 1.831$$

As described above, "a" is automatically reflected as "0.124" and "b" is automatically reflected as "1.831", and the unit scale of the X axis is created by the linear expression  $0.124 * \text{ch} + 1.831$ .

## 9. Gauss-fit

This software has a peak analysis function by Gauss fitting. By opening the dedicated screen, you can calculate the half-value width, etc. by dividing the peaks with a small number of counts and the peaks that overlap with each other during measurement or for the histogram data in the data file.

### 9.1. Startup screen

Select Tool from the menu bar and execute gauss fit analysis. After execution, the startup screen shown below will be displayed.

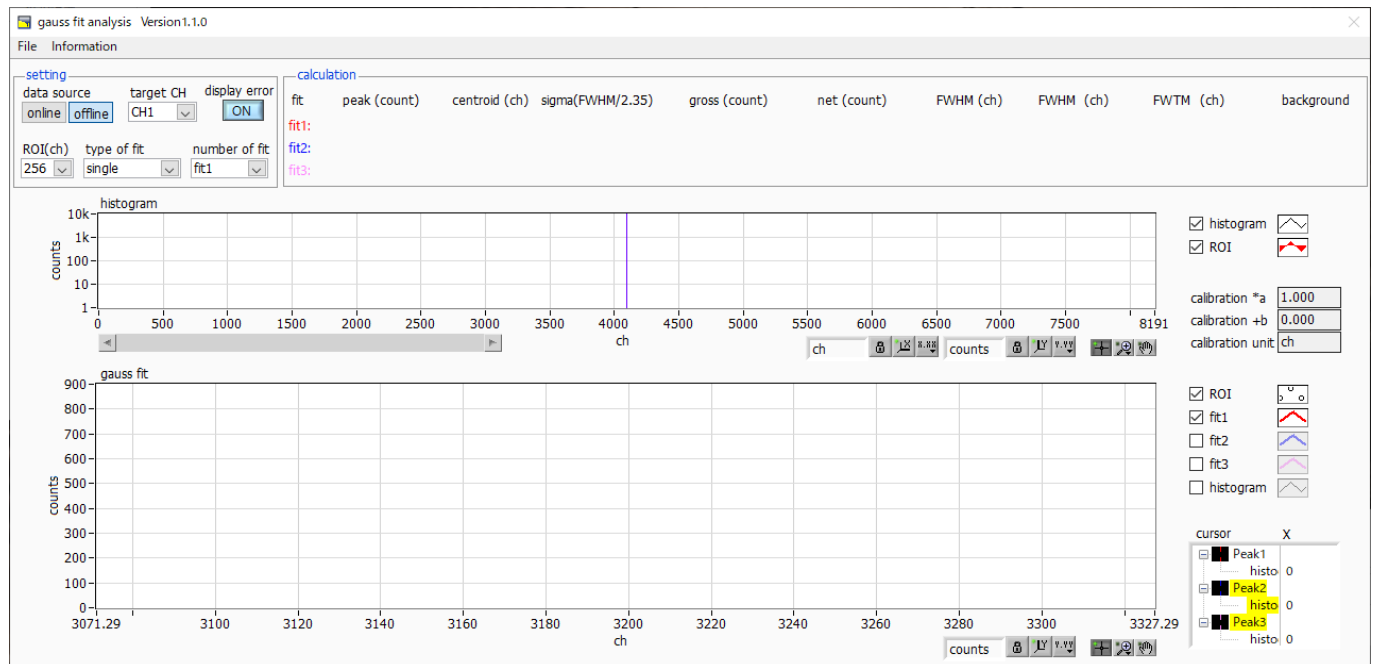


Figure 17 Gauss fit startup screen

#### \* Menu section

- |                            |   |
|----------------------------|---|
| File - open gauss fit file | Read Gauss fit file   |
| File - open histogram file | Read histogram data file  |
| File - save gauss fit file | Save Gaussian fit data to a file  |
| File - save image          | Save screen in png format   |
| File - close               | Exit screen   |
| Information                | Display the information screen. Display precautions when using this screen on the dialog screen |

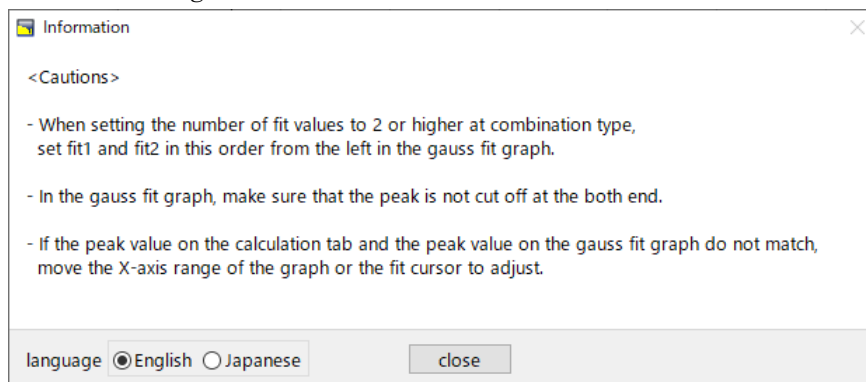


Figure 18 Information screen

## \* Setting section

data source	Select the data to be analyzed
online	Targets the data being measured on the main screen
offline	Targets the data in the pre-read histogram data file or Gauss fit data file
target CH	Analysis target CH setting
display error	Select the error to be displayed
ROI (ch)	It is the number of data points to be analyzed to be displayed in the graph of gauss fit. Choose from 256 or 512 channels
type of fit	Select the type of Gaussian fit either single or combination. Single is normally sufficient. Select combination in case two or three peaks come too close to fit.
number of fit	Setting the number of Gaussian fits. Gaussian fit analysis can be performed on up to 3 peaks for a single histogram

## \* Calculation section

peak (count)	Maximum count
centroid (ch)	Median value (ch) calculated from the sum of all counts
sigma(FWHM/2.35)	Standard deviation
gross (count)	Sum of counts
net (count)	Sum of counts minus background
FWHM (ch)	Half width
FWHM	Half width * The unit is the energy calibration state on the main screen.
FWTM	1/10 width of the peak * The unit is the energy calibration state on the main screen.
background	background value
calibration *a	The energy calibration factor *a on the main screen is displayed
calibration +b	The energy calibration factor +b on the main screen is displayed.
calibration unit	The unit on the main screen is displayed
histogram graph	The histogram plot in the histogram graphs the histogram data for Gaussian fit. The ROI plot is the part displayed in the gauss fit graph and is displayed in red. You can change the display position while keeping the number of display points constant by moving the horizontal slide bar at the bottom left of the graph to the left or right. If each check box is checked, the plot is displayed, and if it is not checked, the plot is hidden.
gauss fit graph	From the histogram data displayed in the histogram graph, the channel set by ROI (ch) is extracted from the start position of the X axis of the gauss fit graph and displayed. The fit1 to fit3 plots are Gaussian-fitted data for the peaks set by each cursor. Histogram plots are concatenated data of Gaussian fit results. You can change the display position while keeping the number of display points constant by dragging the graph area after select the pan button  at the bottom right of the graph to the left or right. The X of the cursor at the bottom right of the graph is the position of the cursor to be aligned with the Gaussian fit target peak, and you can also move the cursor by directly inputting X. If each check box is checked, the plot is displayed, and if it is not checked, the plot is hidden.

## 9.2. On-line

For the histogram acquired during measurement, perform Gaussian fit analysis for the specified peak according to the following procedure.

1. Select data source, “online”.
2. Start measurement in histogram mode. The histogram during measurement is displayed in the histogram graph.
3. In the gauss fit graph, the histogram of the part of interest in the histogram graph is displayed. To set the horizontal axis range of this graph, enter the minimum value of the horizontal axis of the gauss fit graph directly or move the vertical cursor in the histogram graph to the target range. After that, the histogram graph will have the range selected in the gauss fit graph red.
4. Set up to three vertical cursors at the approximate peak part of the analysis target. To set the cursor, drag the red, blue, and pink vertical cursor lines while the button in the red frame in the figure below is pressed, and drop them on the peak part. Alternatively, you can move the cursor and set it by entering a numerical value in the X value of the cursor at the bottom right of the screen.
5. Calculation results such as half-value width based on each Gaussian fit data are displayed in the calculation section

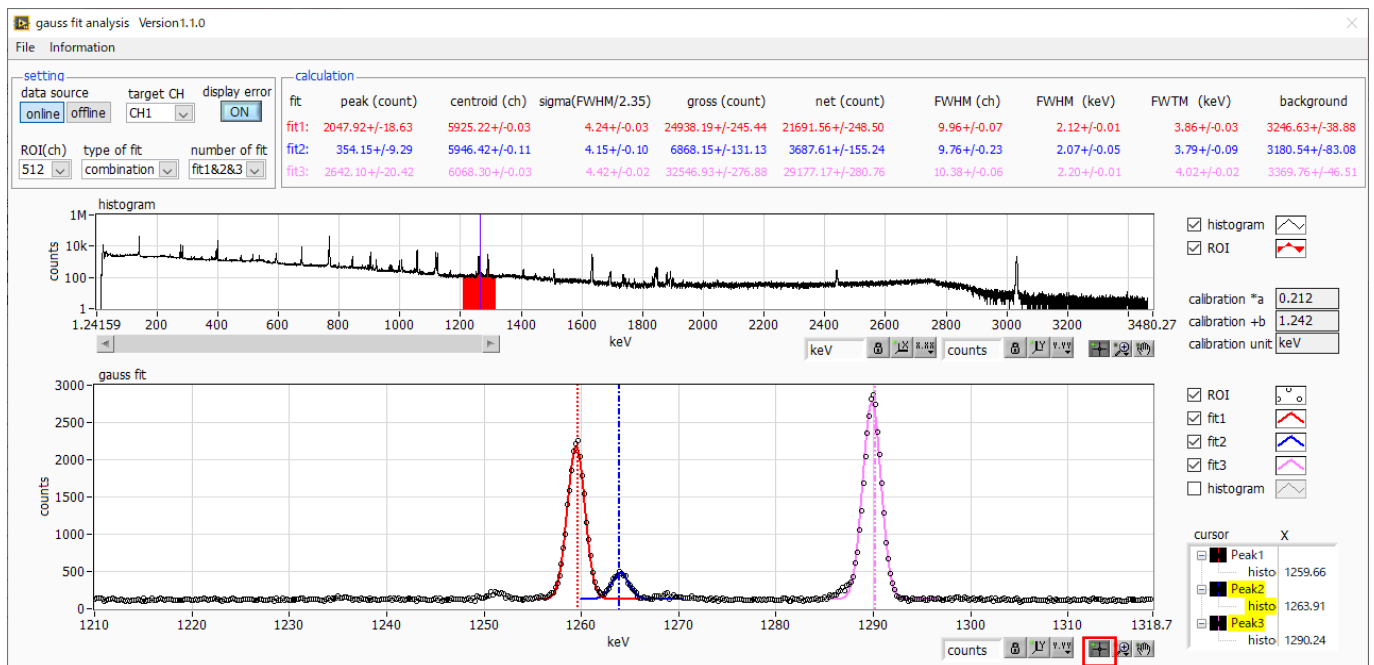


Figure 19 Gauss fit screen, ONLINE

### 9.3. Off-line

For the histogram obtained by reading the histogram data file or the Gauss fit data file, perform Gauss fit analysis for the specified peak by the following procedure.

1. Select data source, “offline”.
2. Click open gauss fit file or open histogram file from file in the menu. A file selection dialog is displayed. Select the data file to be read and open it. The histogram in the data file is displayed in the histogram graph

The rest of the procedure is the same as the on-line mode.

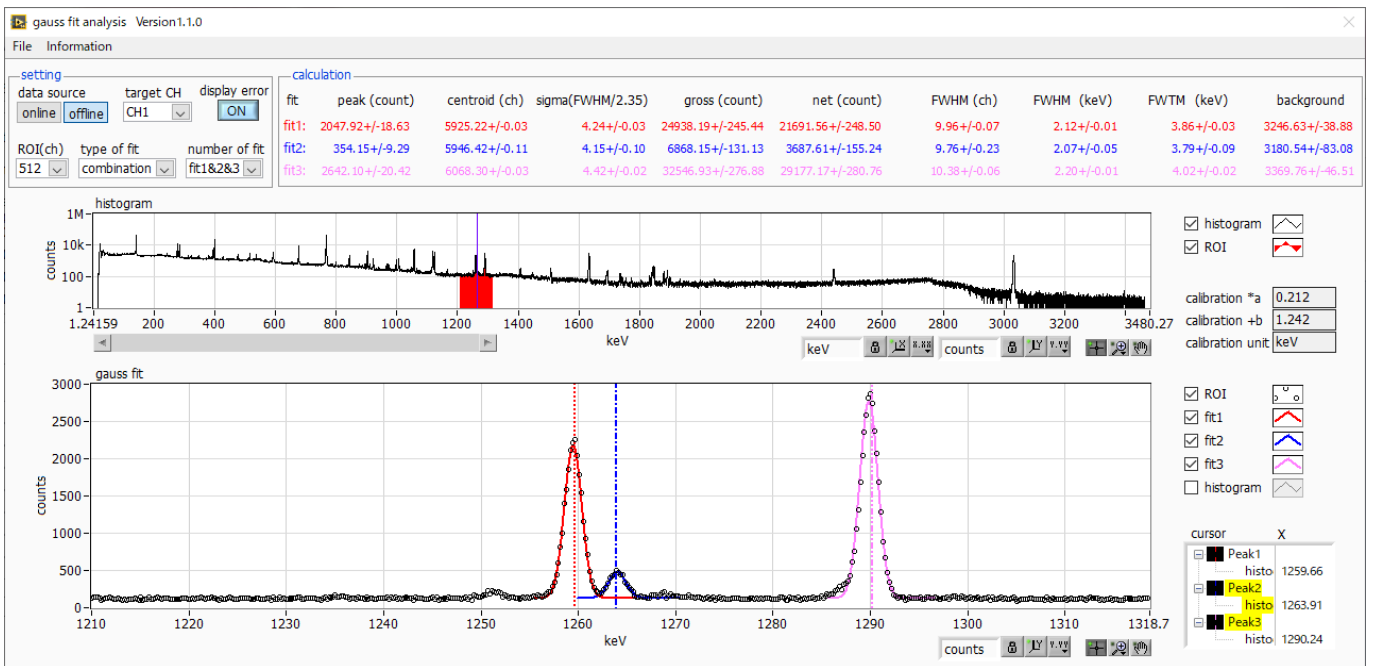


Figure 20 Gauss fit screen, OFFLINE

## 9.4. Notes

Please note the following points to operate normally on the Gauss fit screen.

- When selecting combination as type of fit and setting the number of fit to two or more, set fit1 and fit2 in this order from the left in the gauss fit graph. If fit1 is not working properly, the following fit2 and fit3 will also be hidden.
- The peak to be fitted should be displayed without being cut off at both ends of the gauss fit graph.
- If the peak value on the calculation tab and the peak value on the gauss fit graph do not match, move the horizontal axis range of the graph or the fit cursor.

## 9.5. End

To close this screen, click close from File on the menu bar.

## 10. Peak search

This software has a function to automatically detect peaks and perform peak analysis. You can open the dedicated screen and automatically detect the peak and calculate the half width etc. for the histogram data of the data file during measurement.

### 10.1. Startup screen

Execute peak search analysis from Tool on the menu bar. After execution, the startup screen shown below will be displayed.

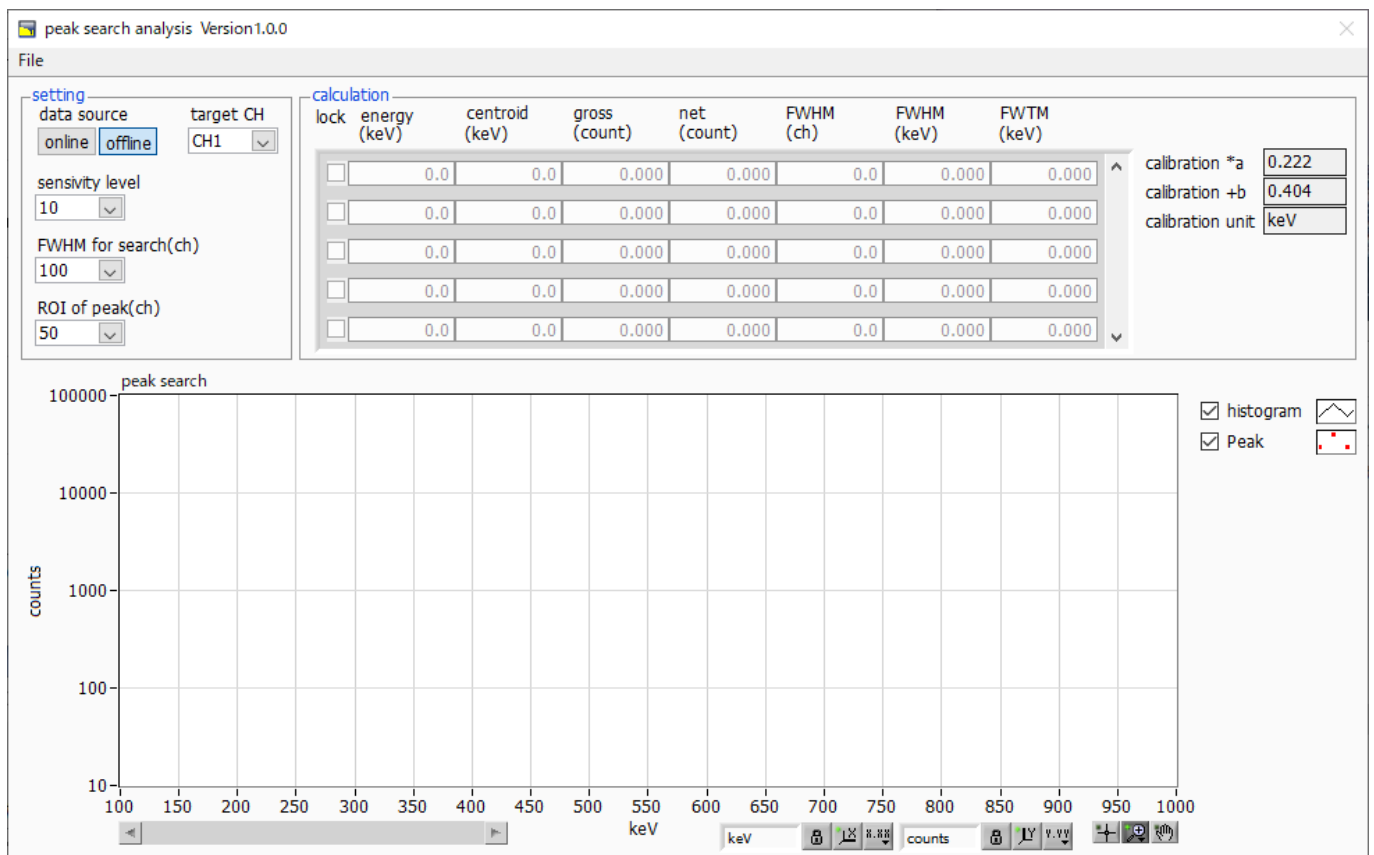


Figure 21 Peak search startup screen

\*Menu section

- |                              |                            |
|------------------------------|----------------------------|
| File - open peak search file | Read peak search file      |
| File - open histogram file   | Read histogram data file   |
| File - save peak search file | Save peak search to a file |
| File - save image            | Save screen in png format  |
| File - close                 | Exit screen                |



## \*Setting section

data source	Select the data to be analyzed
online	Targets the data being measured on the main screen
offline	Targets the data in the pre-read histogram data file or Gauss fit data file
target CH	Analysis target CH setting
sensitivity level	Selection of peak detection threshold. If the value is small, even a slight peak will be detected.
FWHM for search (ch)	Approximate half-value width required for peak search. The unit is channel. Set the approximate half width from the actual peak by channel (point)
ROI of peak (ch)	Setting the number of ROI plots (CH) for the peak

## \* Calculation section

lock	If you want to display it at the top of the list, turn on the check. If it is OFF, the display position may move up or down each time a peak is detected.
centroid (ch)	Median value (ch) calculated from the sum of all counts
gross (count)	Sum of counts
net (count)	Sum of counts minus background
FWHM (ch)	Half width
FWHM	Half width * The unit is the energy calibration state on the main screen.
FWTM	1/10 width of peak * The unit is the energy calibration state on the main screen.
calibration *a	The energy calibration factor *a on the main screen is displayed.
calibration +b	The energy calibration factor +b on the main screen is displayed
calibration unit	The unit on the main screen is displayed.
peak search graph	The histogram plot in the peak search graph displays the histogram data of the peak search target as a graph. The Peak plot is the part where the peak is detected and is displayed in red with a Gaussian fit. You can change the display position while keeping the number of display points constant by moving the horizontal slide bar at the bottom left of the graph to the left or right. If each check box is checked, the plot is displayed, and if it is not checked, the plot is hidden.

## 10.2. On-line

Perform peak search analysis using the following procedure for the histogram acquired during measurement.

1. Select data source online
2. Start measurement in histogram mode. The histogram being measured is displayed in the peak search graph.
3. In the peak search graph, the peak part where the peak is detected is gauss-fitted and a red histogram is displayed.
4. In the calculation section, the calculation results such as the half-value width are displayed for each peak detected. If the peak is detected or not detected, the calculation result display may move up and down, making it difficult to see. In this case, if you turn on the lock check, it will always be displayed at the top.

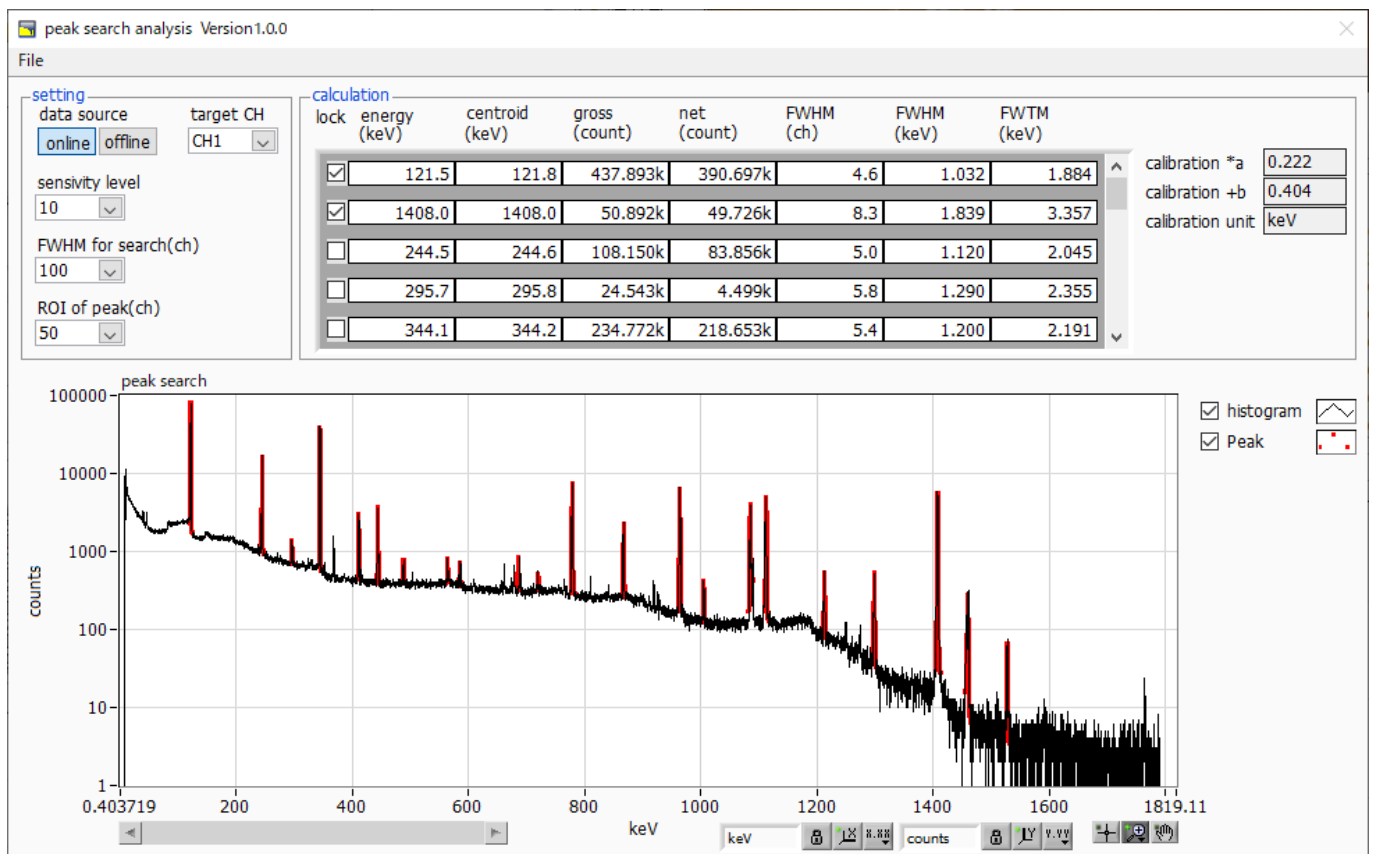


Figure 22 Peak search screen, **ONLINE**

### 10.3. Off-line

Perform peak search analysis according to the following procedure for the histogram obtained by reading the histogram data file or peak search data file.

1. Select data source as offline
2. Click open peak search file or open histogram file from file on the menu bar. A file selection dialog is displayed. Select the data file to be read and open it. The histogram in the data file is displayed in the peak search graph

The rest of the procedure is the same as the on-line mode.

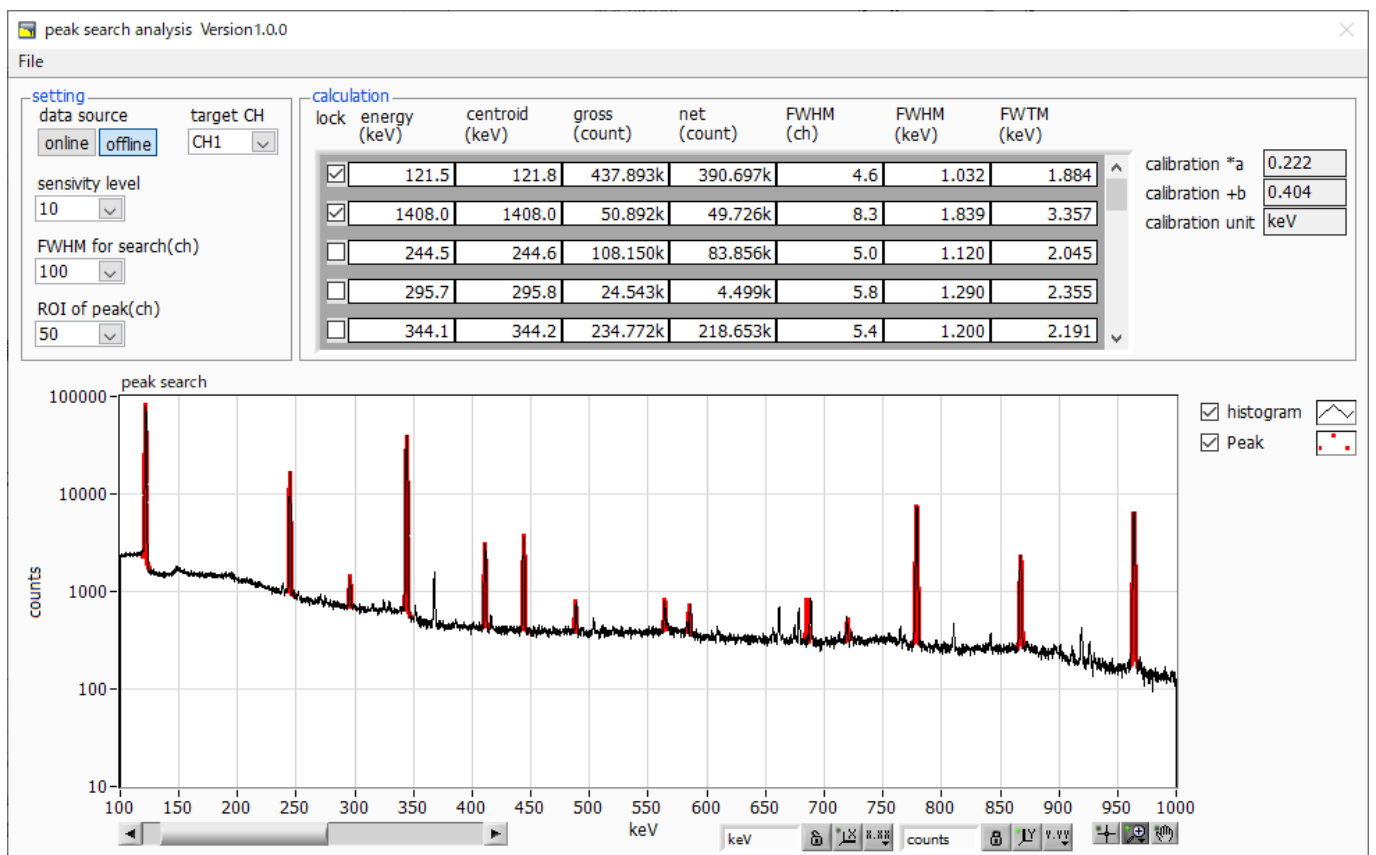


Figure 23 Peak search screen, **ONLINE**

## **10.4. Notes**

Please note the following points to operate normally on the peak search screen.

- The degree of peak search changes by adjusting the sensitivity level, FWHM for search (ch.), and ROI of peak (ch.). Adjust each setting to the optimum while observing the shape of the red peak detection part.

## **10.5. End**

To close this screen, click close from File on the menu bar.

## **TechnoAP Co., Ltd.**

Address: 2976-15 Mawatari, Hitachinaka-city, Ibaraki-prefecture, 312-0012, Japan

TEL: +81-29-350-8011

FAX: +81-29-352-9013

URL: <http://www.techno-ap.com>

E-mail: [info@techno-ap.com](mailto:info@techno-ap.com)

Business Hours: 9:30 AM to 17:00 PM, Monday to Friday